

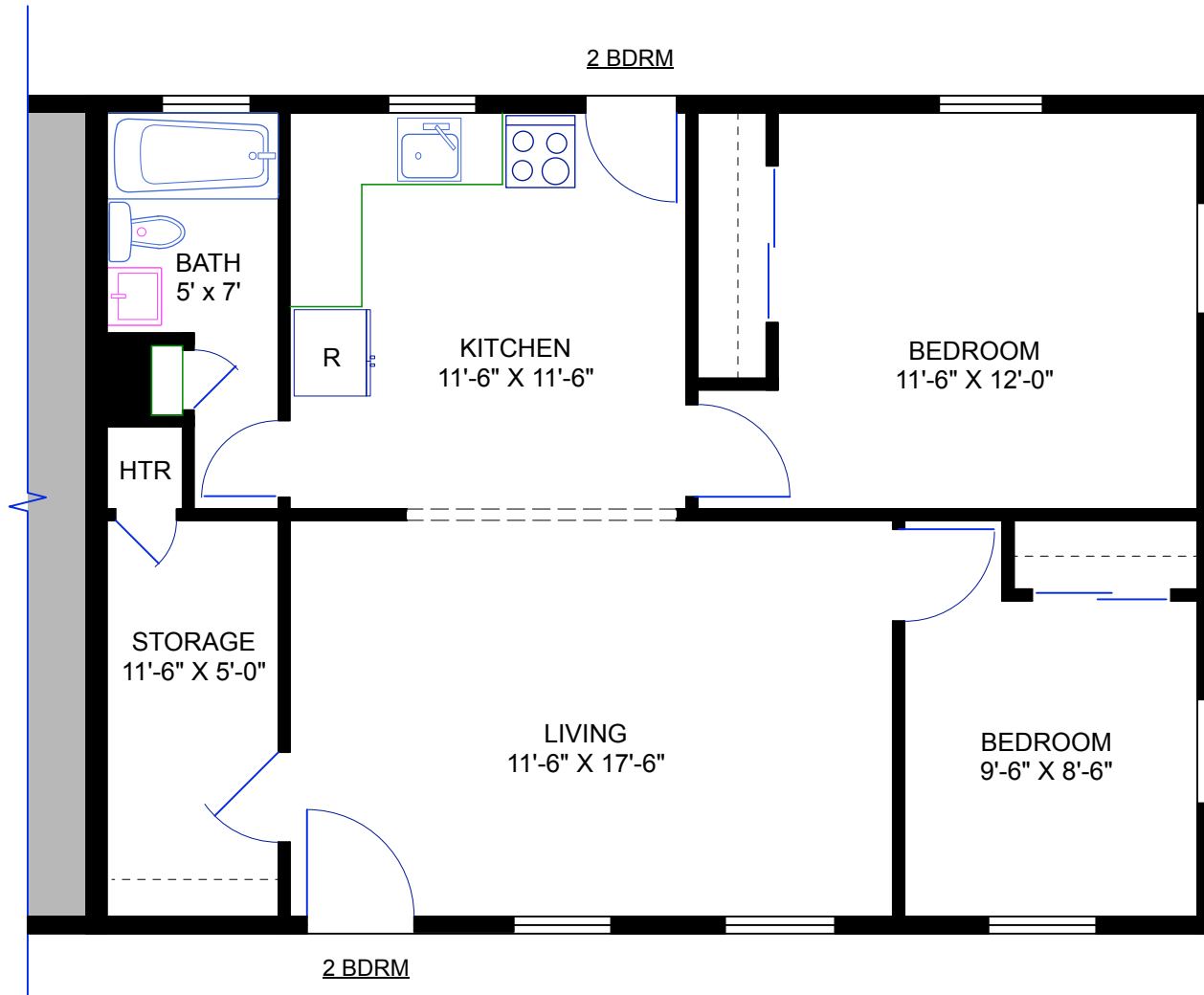
Sachem Village Housing By Unit Type (Total Inventory\*)

Apartment Type	Sq Ft	No. of Apts	No. of Beds	No. of Baths	Washer/Dryer	Dish washer	Storage	Heat incl.	Hot Water Incl.	FY25 Base Market Rent Range
<b>Field Road</b>										
2-Bedroom Duplex	644	10	2	1	NO hook up- Laundromat on Haddock Ln	N	N	N	N	\$1,265
3-Bedroom Duplex	704	10	3	1	NO hook up- Laundromat on Haddock Ln	N	N	N	N	\$1,375
2-Bedroom Duplex - Renovated	704	4	3	1	NO hook up- Laundromat on Haddock Ln	Y	N	N	N	\$1,550
3-Bedroom Duplex - Renovated	644	2	2	1	NO hook up- Laundromat on Haddock Ln	Y	N	N	N	\$1,675
<b>North Sachem</b>										
2-Bedroom Townhouse	603	18	2	1	Hook Up Only - Side-by-Side	N	N	Y	Y	\$1,450
2-Bedroom Townhouse- Renovated	603	6	2	1	Stackable units included	N	N	Y	Y	\$1,650
<b>Phase I</b>										
1-Bedroom Triplex **	683	3	1	1	Hook Up Only - Side-by-Side	Y	Y	Y	Y	\$1600 - \$1675
2-Bedroom 4-plex Interior unit	1,025	22	2	1	Hook Up Only - Side-by-Side	Y	Y	Y	Y	\$2050 - \$2150
2-Bedroom 4-plex Exterior unit	1,025	32	2	1	Hook Up Only - Side-by-Side	Y	Y	Y	Y	\$2080 - \$2200
2-Bedroom 4-plex Interior unit	1,072	22	2	1	Hook Up Only - Side-by-Side	Y	Y	Y	Y	\$2150 - \$2240
2-Bedroom 4-plex Exterior unit	1,072	32	2	1	Hook Up Only - Side-by-Side	Y	Y	Y	Y	\$2180 - \$2290
3-Bedroom Duplex	1,380	14	3	1	Hook Up Only - Side-by-Side	Y	Y	Y	Y	\$3100 - \$3230
<b>Phase II</b>										
1-Bedroom 6-8 plex	720	22	1	1	Hook Up Only - Stackable	Y	Y	Y	Y	\$1695 - \$1765
2-Bedroom Triplex **	832	8	2	1	Hook Up Only - Stackable	Y	Y	Y	Y	\$1825 - \$1895
2-Bedroom Duplex	938	10	2	1.5	Hook Up Only - Stackable	Y	Y	Y	Y	\$2050 - \$2140
2-Bedroom Duplex	1,024	6	2	2.5	Hook Up Only - Stackable	Y	Y	Y	Y	\$2255 - \$2325
2-Bedroom 6-8 plex	1,026	14	2	1.5	Hook Up Only - Stackable	Y	Y	Y	Y	\$2175 - \$2265
2-Bedroom Duplex	1,032	2	2	1.5	Hook Up Only - Stackable	Y	Y	Y	Y	\$2175 - \$2265
3-Bedroom 6-8 plex	1,222	14	3	2	Hook Up Only - Stackable	Y	Y	Y	Y	\$2815 - \$2895
2-Bedroom Triplex	1,250	4	2	2.5	Hook Up Only - Side-by-Side	Y	Y	Y	Y	\$2750 - \$2845

\*Total inventory means all the units at Sachem, not what is available at any given time to lease.

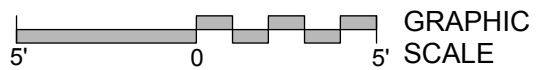
\*\*Accessible Unit

Pets Permitted upon prior approval with additional monthly cost.

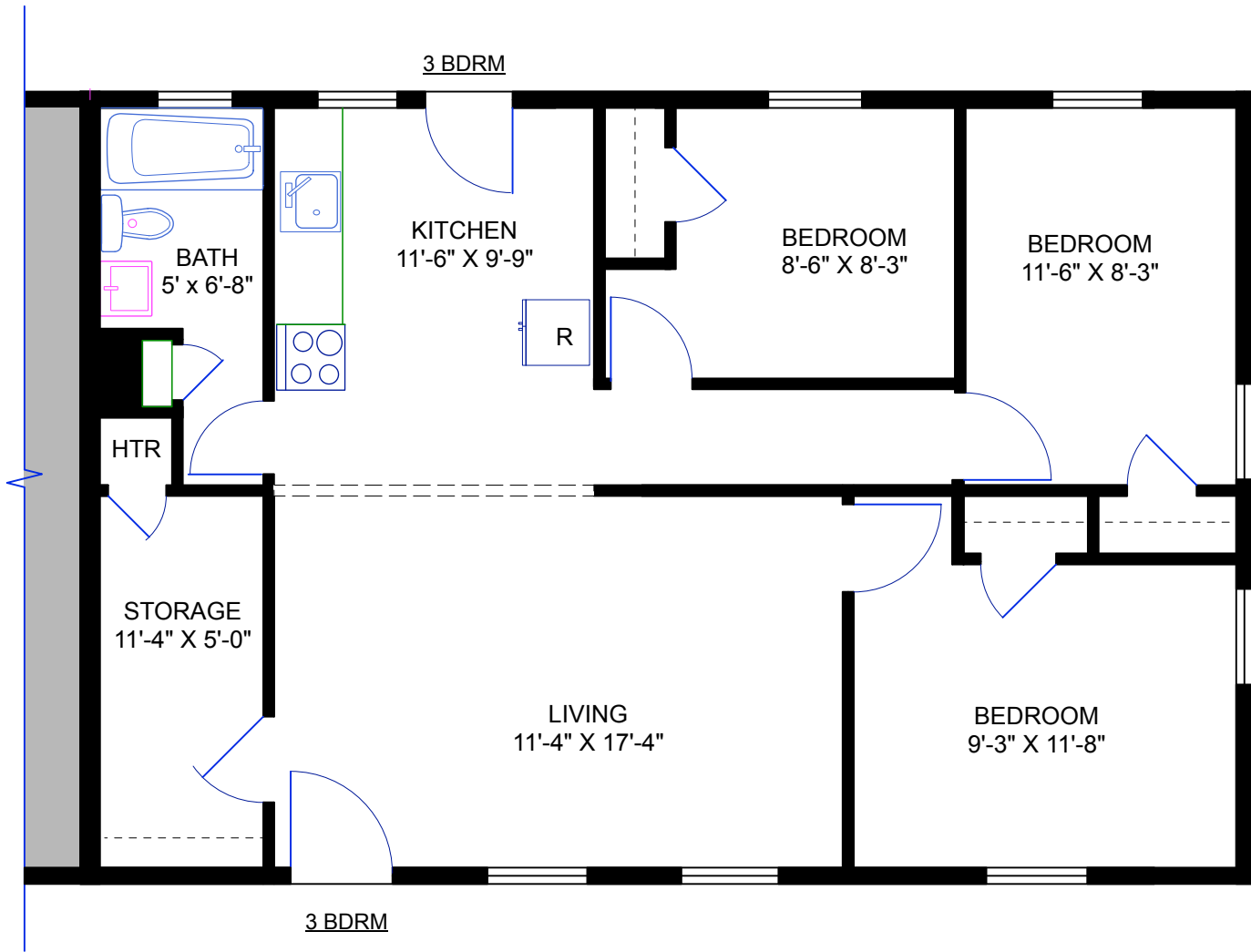


**FIRST FLOOR**

**SACHEM VILLAGE**



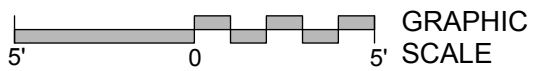
○ **"FIELD" 2 BDRM DUPLEX**  
644 SQ. FT.

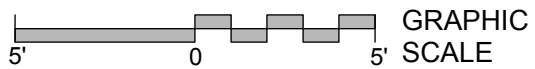
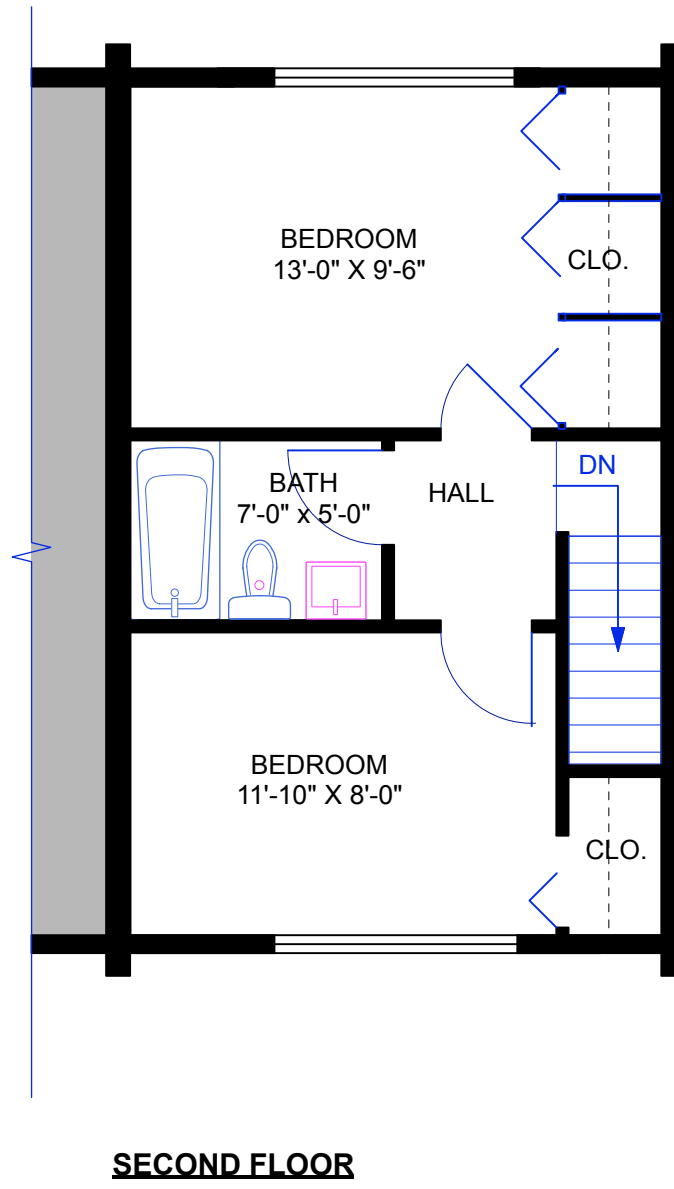
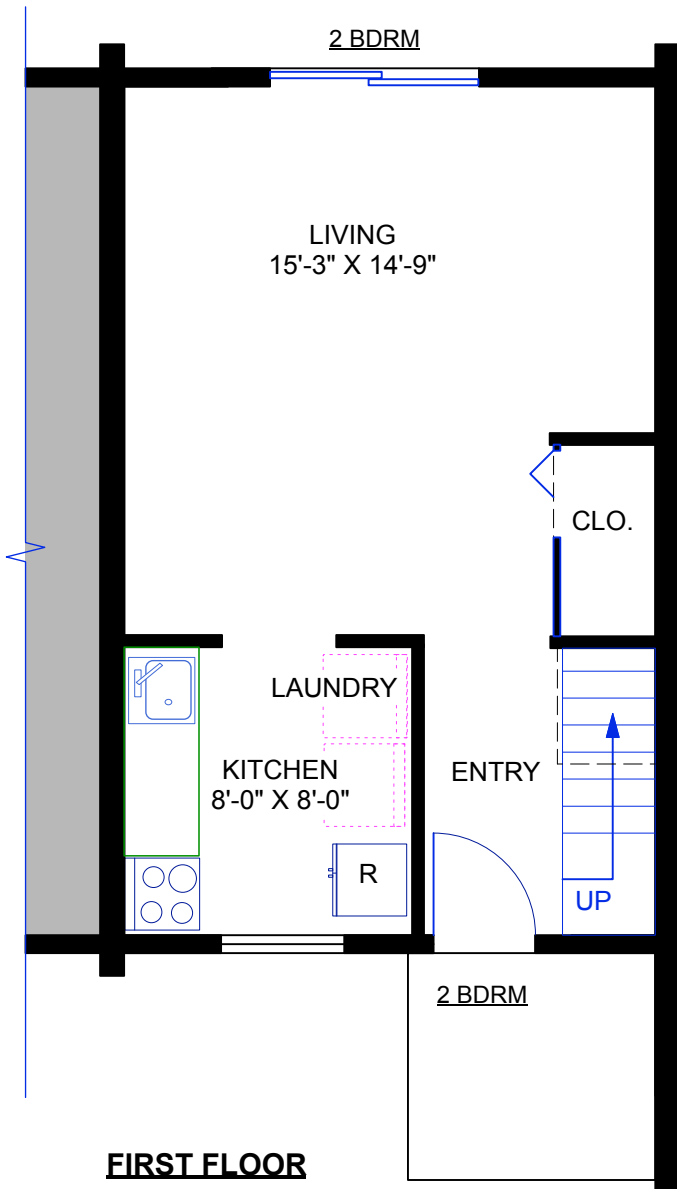


**FIRST FLOOR**

**SACHEM VILLAGE**

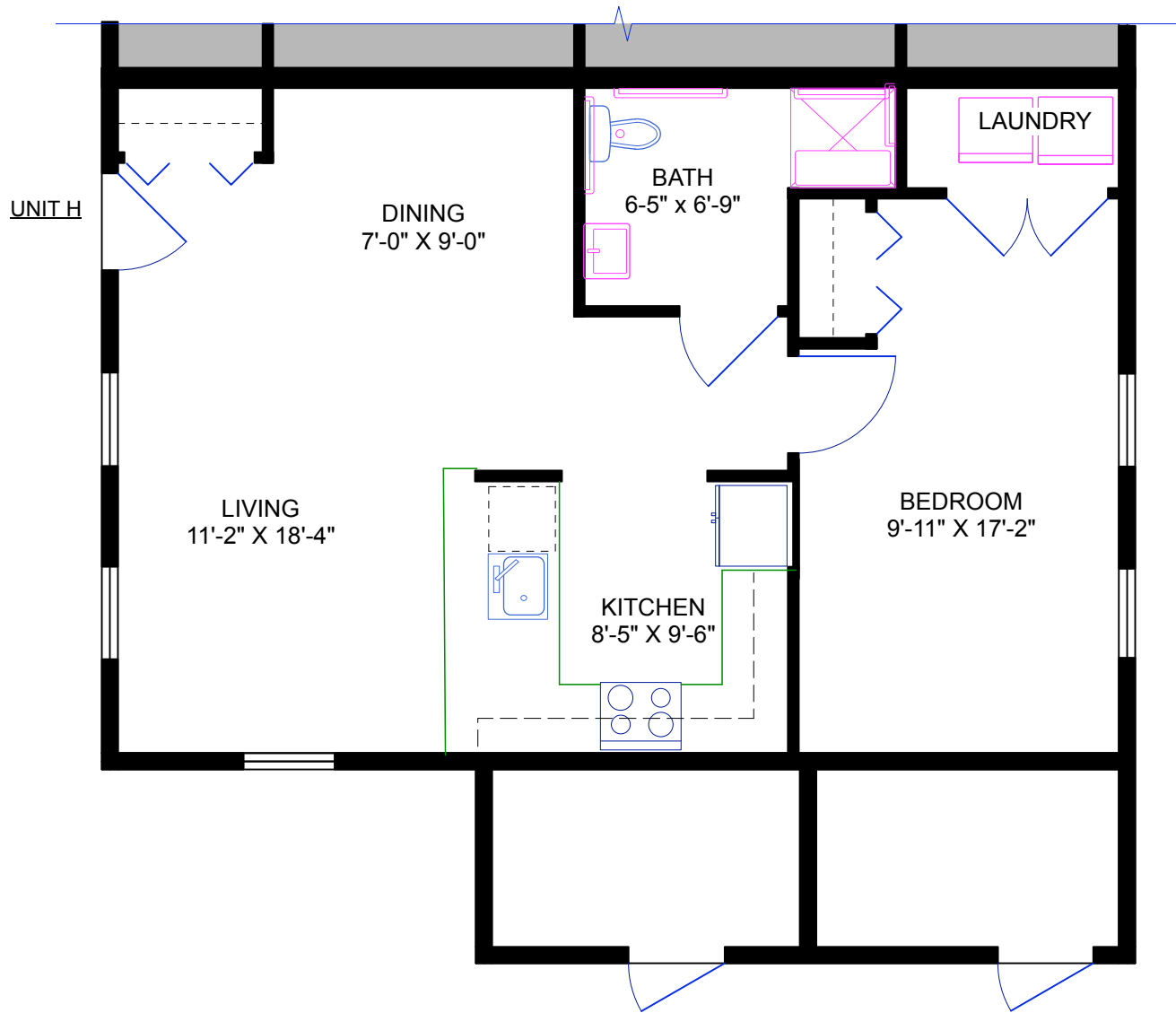
FIELD RD. 3 BDRM DUPLEX  
704 SQ. FT.





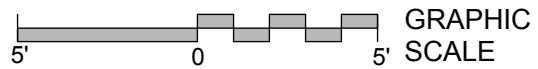
**SACHEM VILLAGE**

2 BEDROOM UNIT  
603 SQ. FT.

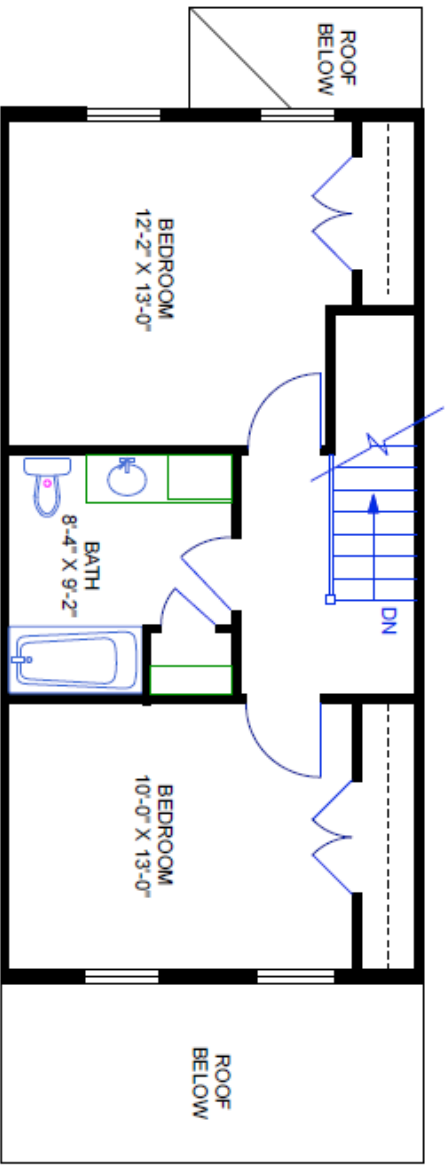


**FIRST FLOOR**

**SACHEM VILLAGE**



○ UNIT H - ACCESSIBLE  
683 SQ. FT.

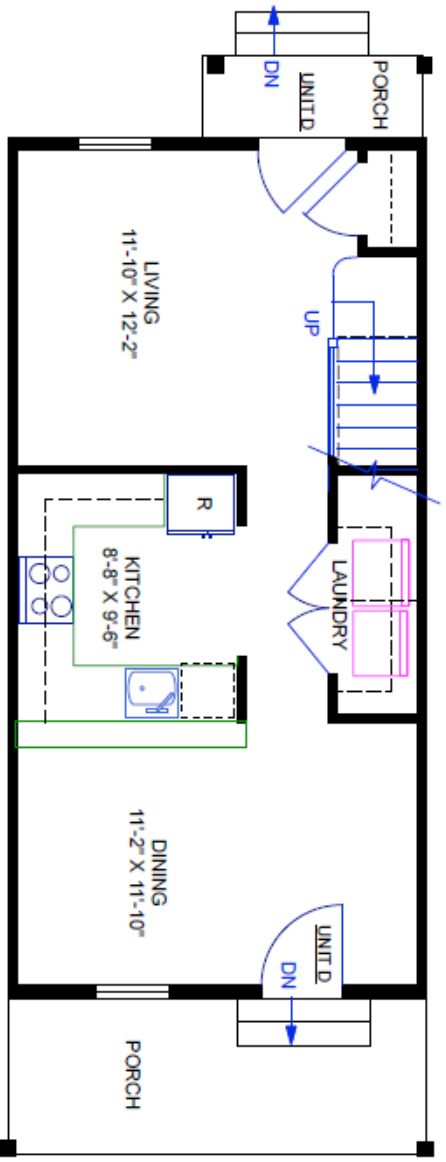


**SECOND FLOOR**

**SACHEM VILLAGE**

**UNIT D - 2 STORY**

1025 SQ. FT.

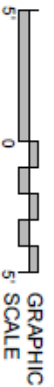


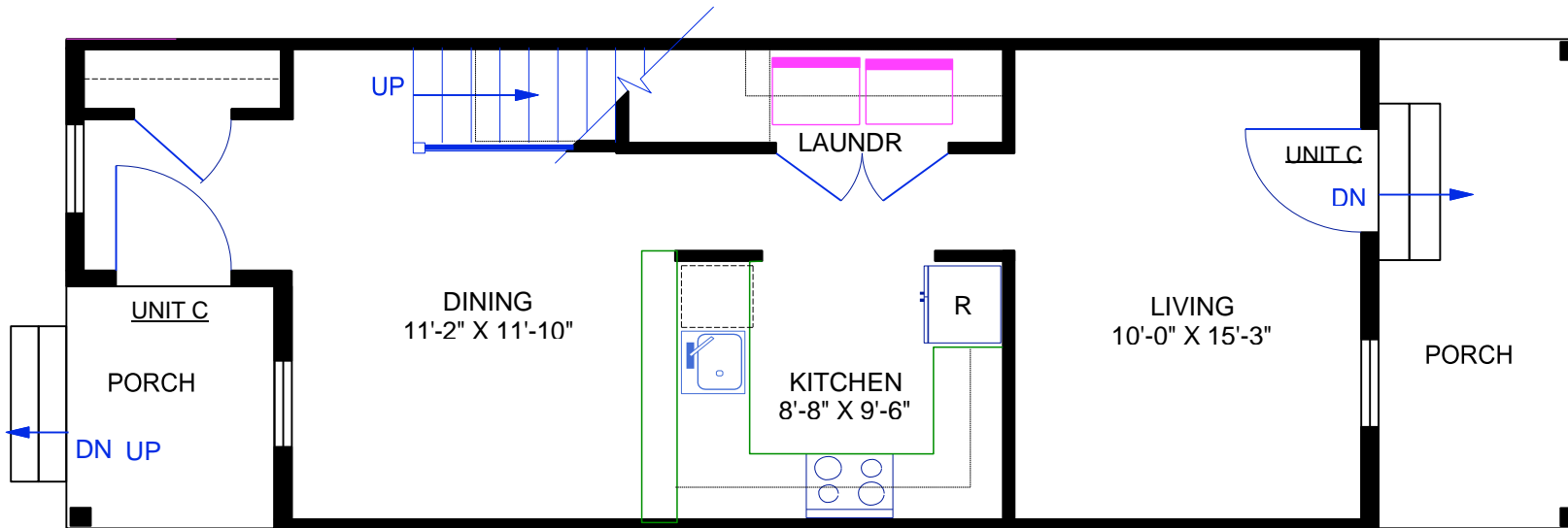
**FIRST FLOOR**

**SACHEM VILLAGE**

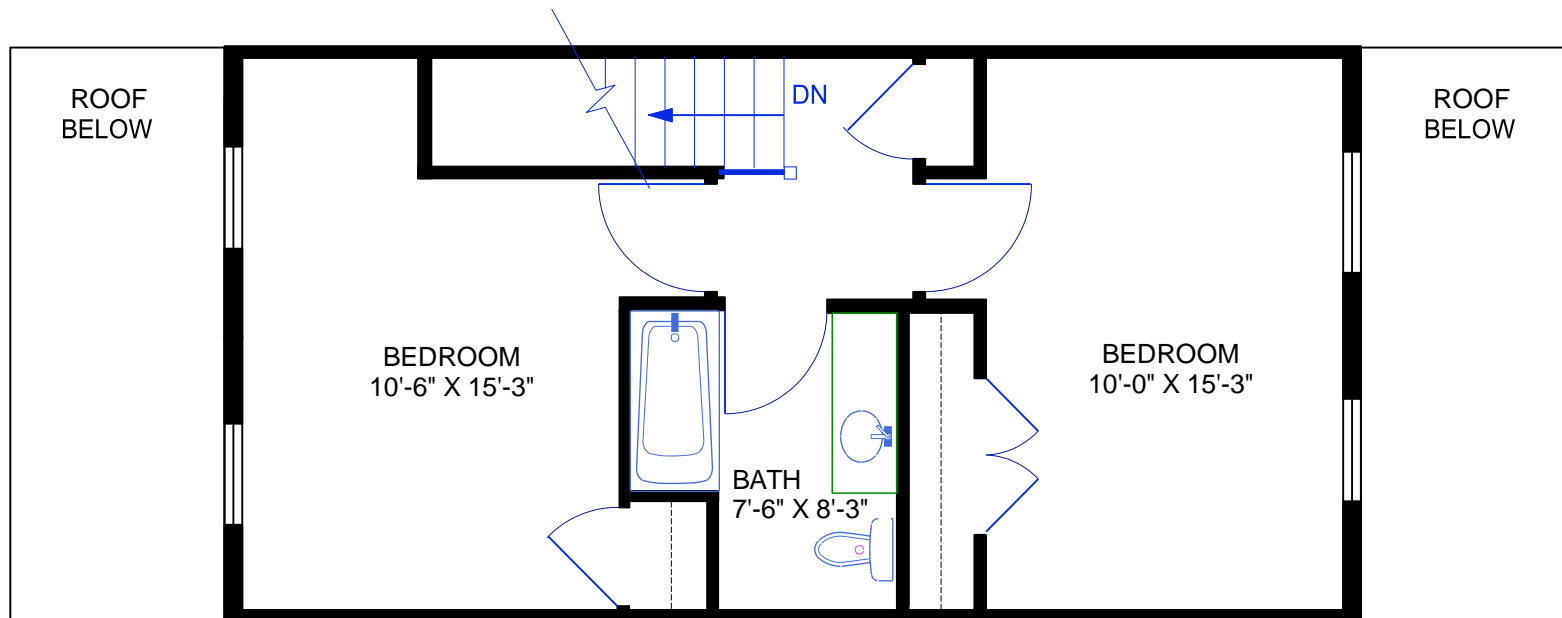
**UNIT D - 2 STORY**

1025 SQ. FT.

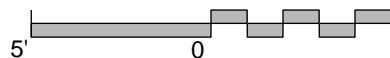


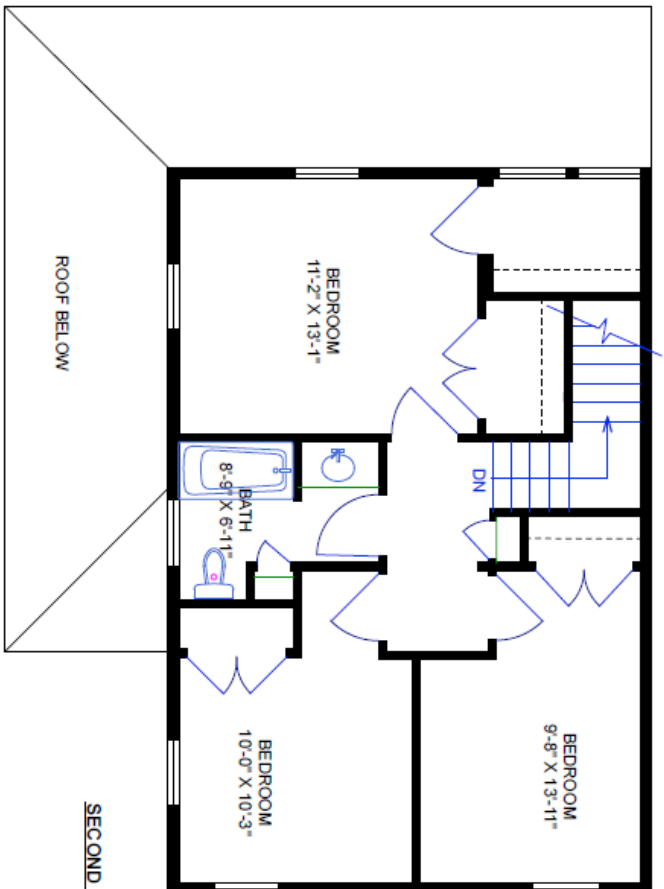


**FIRST FLOOR** 1072 sq ft



**SECOND FLOOR** 1072 sq ft

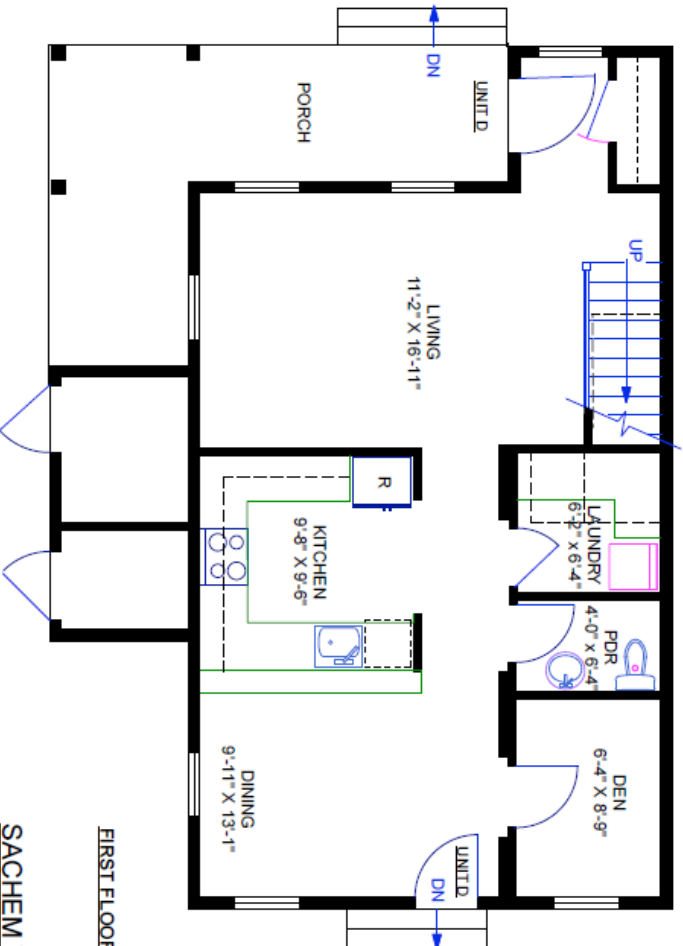




5  
0  
5 GRAPHIC SCALE

SACHEM VILLAGE  
UNIT E - 2 STORY  
1385 SQ. FT.

SECOND FLOOR

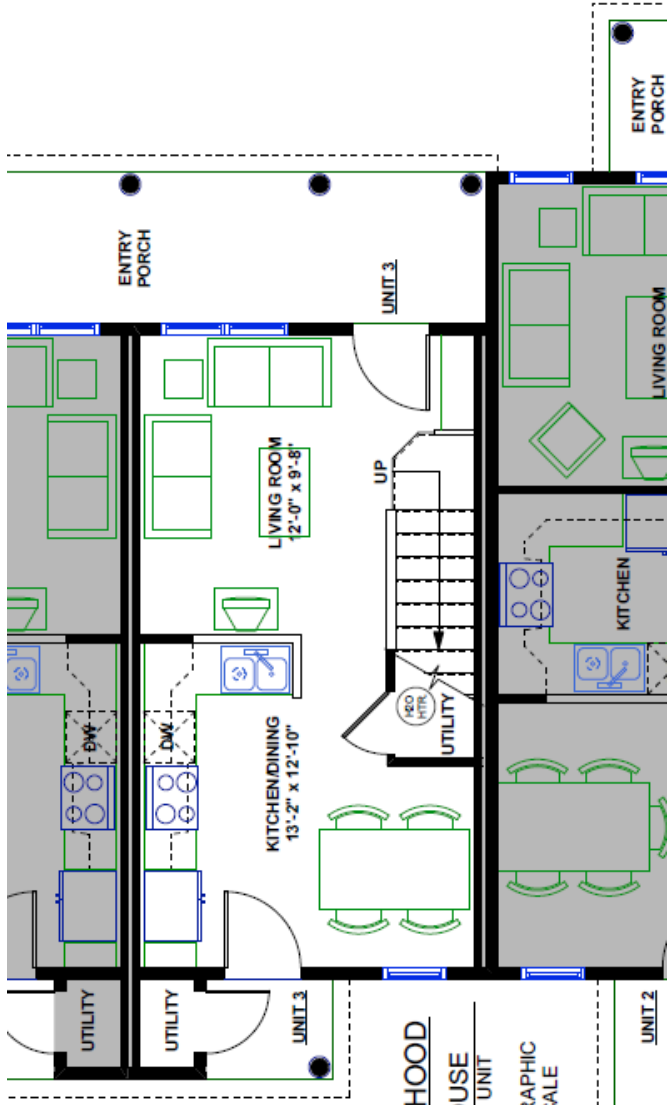


5  
0  
5 GRAPHIC SCALE

SACHEM VILLAGE  
UNIT E - 2 STORY  
1385 SQ. FT.

FIRST FLOOR

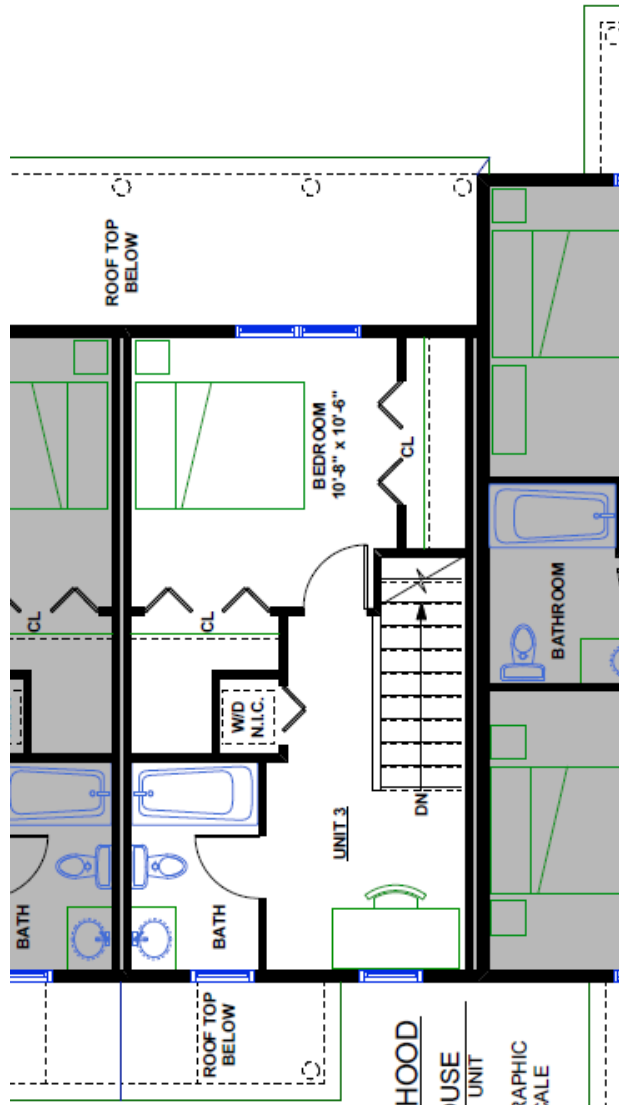




**UNIT 3 & 4 (Opp.)  
(FIRST FLOOR)**

**SACHEM NEIGHBORHOOD**

○ SIX-UNIT TOWNHOUSE  
720 SQ. FT. 1 BEDROOM UNIT



**UNIT 3 & 4 (Opp.)  
(SECOND FLOOR)**

**SACHEM NEIGHBORHOOD**

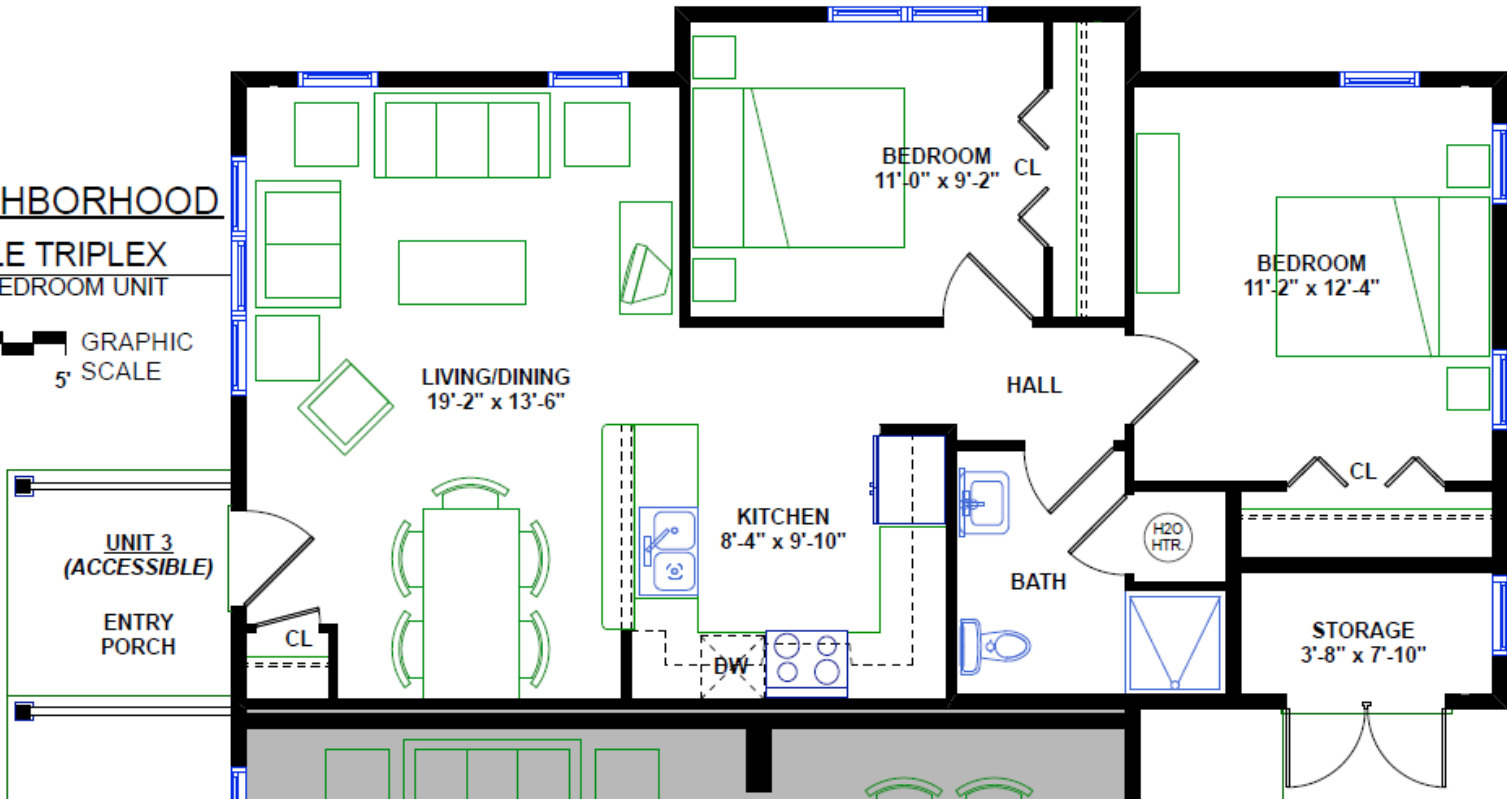
○ SIX-UNIT TOWNHOUSE  
720 SQ. FT. 1 BEDROOM UNIT

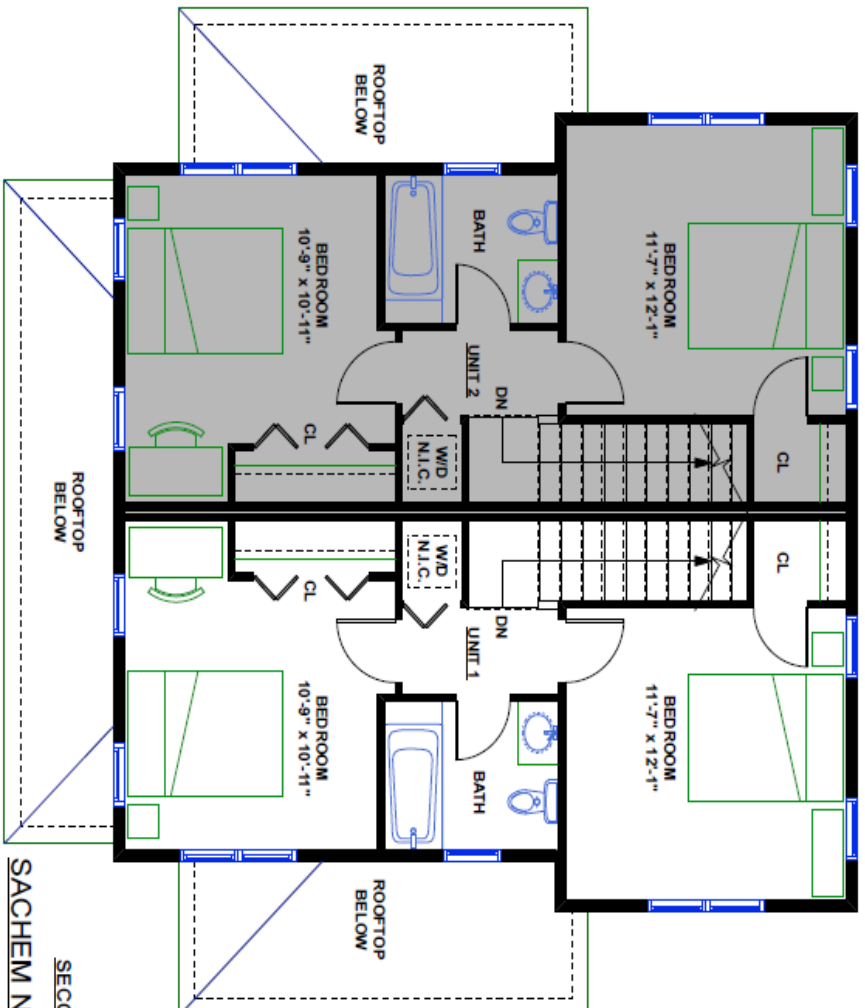


**UNIT 3 (1 OPP.)  
(ACCESSIBLE)**

**SACHEM NEIGHBORHOOD**

**ACCESSIBLE TRIPLEX**  
832 SQ. FT. 2 BEDROOM UNIT





SECOND FLOOR

SACHEM NEIGHBORHOOD



FIRST FLOOR

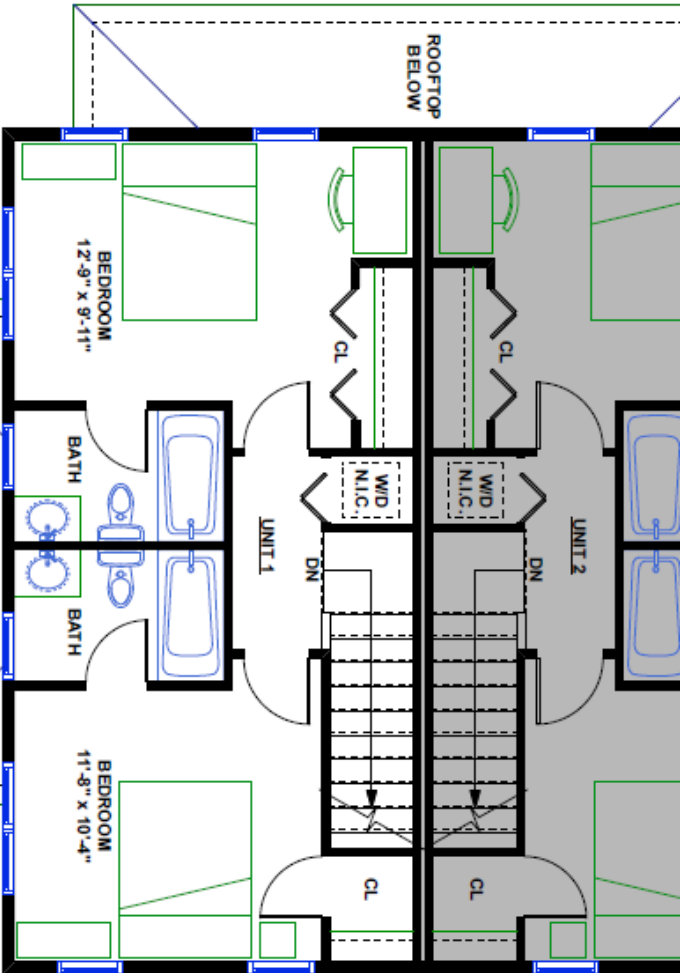
SACHEM NEIGHBORHOOD

BACK-TO-BACK DUPLEX 'B'

938 SQ. FT. 2 BEDROOM UNIT



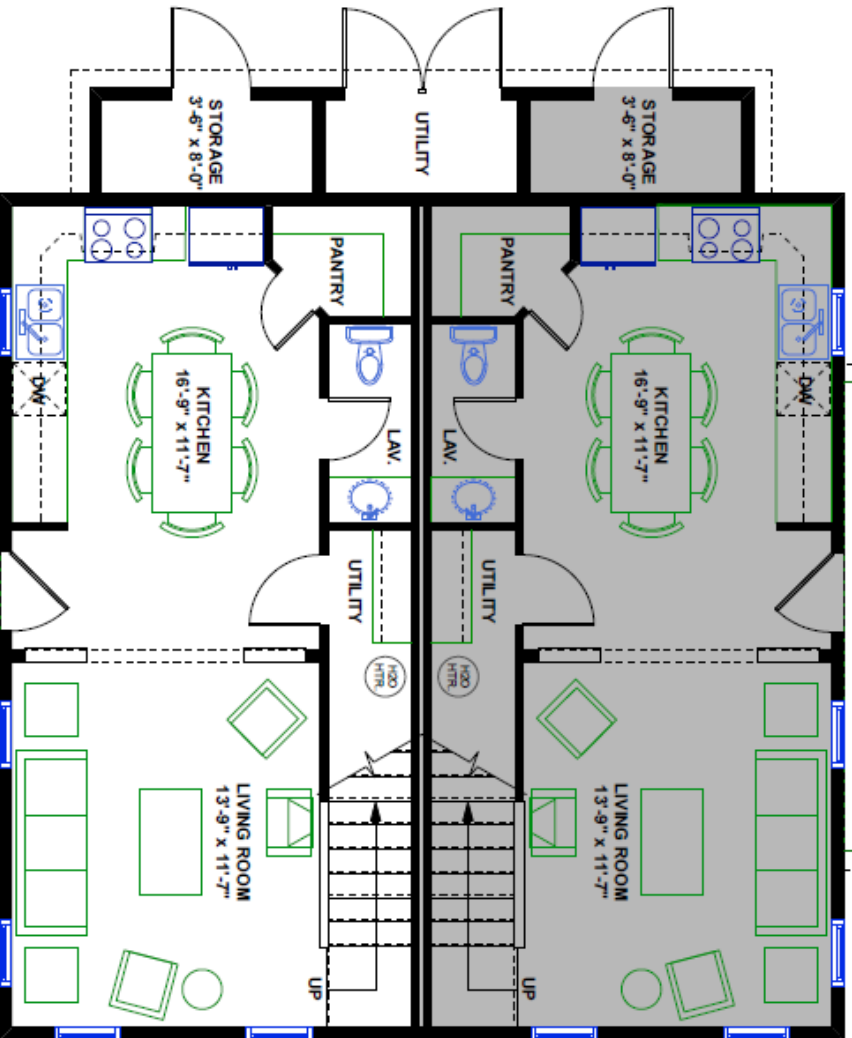
GRAPHIC SCALE



SECOND FLOOR

**SACHEM NEIGHBORHOOD**

BACK-TO-BACK DUPLEX / A /  
1,024 SQ. FT. 2 BEDROOM UNIT



FIRST FLOOR

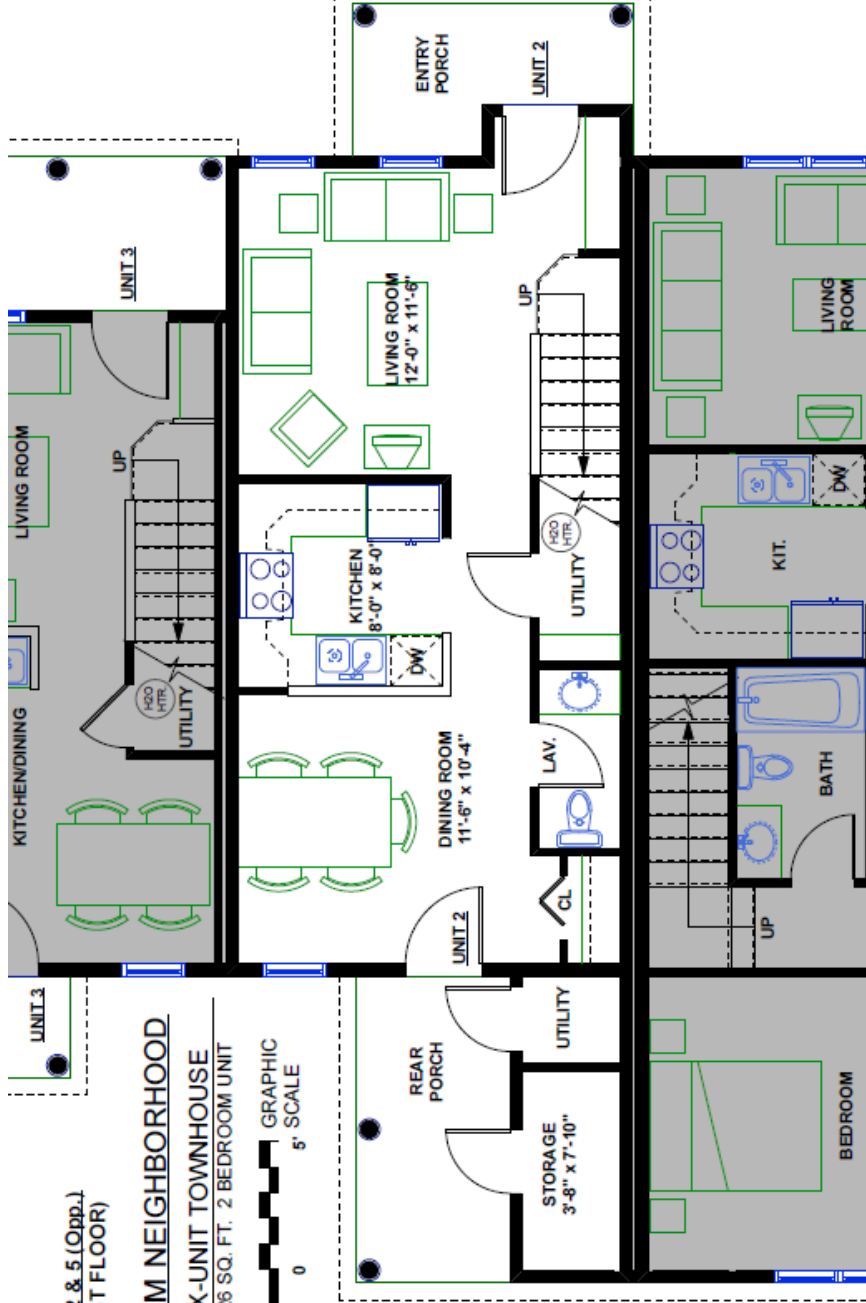
**SACHEM NEIGHBORHOOD**

BACK-TO-BACK DUPLEX / A /  
1,024 SQ. FT. 2 BEDROOM UNIT

UNIT 2 & 5 (Opp.)  
(FIRST FLOOR)

**SACHEM NEIGHBORHOOD**

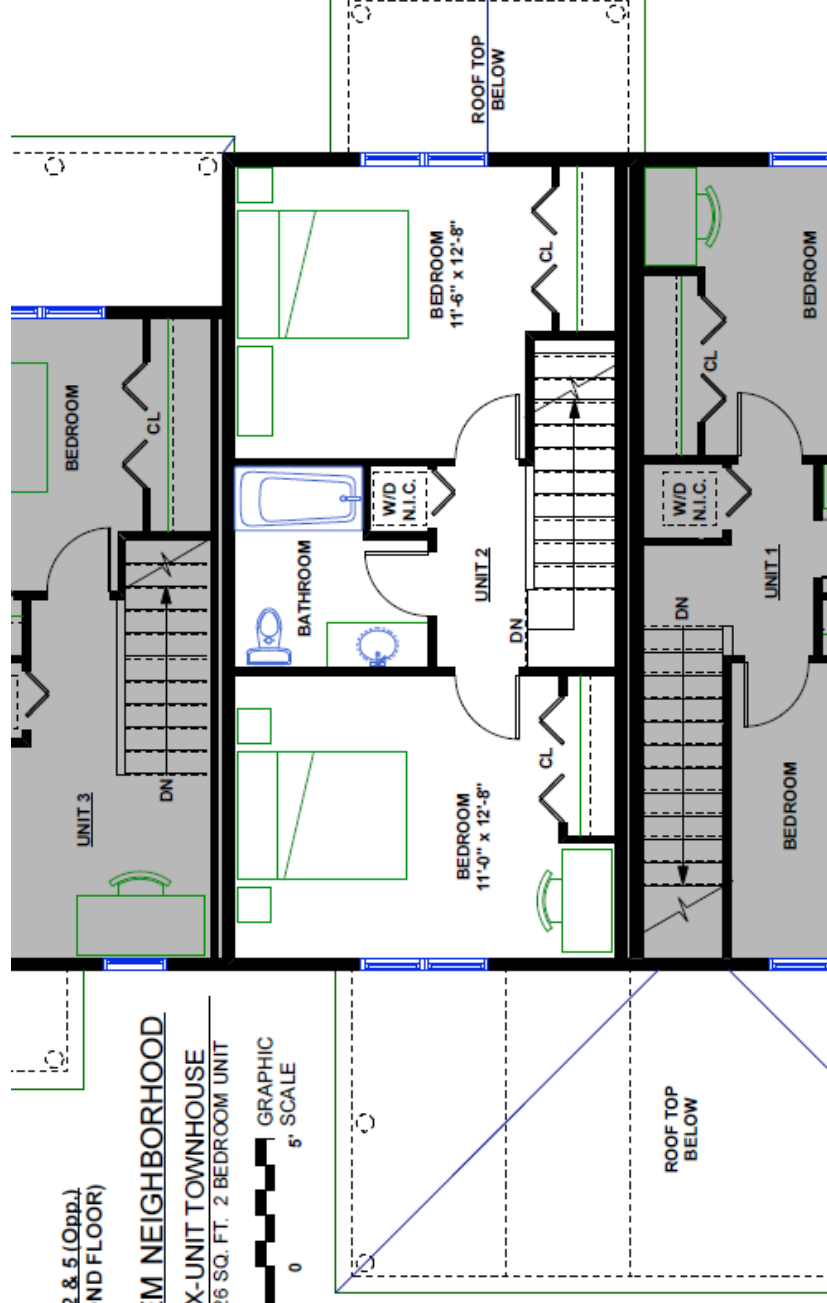
SIX-UNIT TOWNHOUSE  
1026 SQ. FT. 2 BEDROOM UNIT

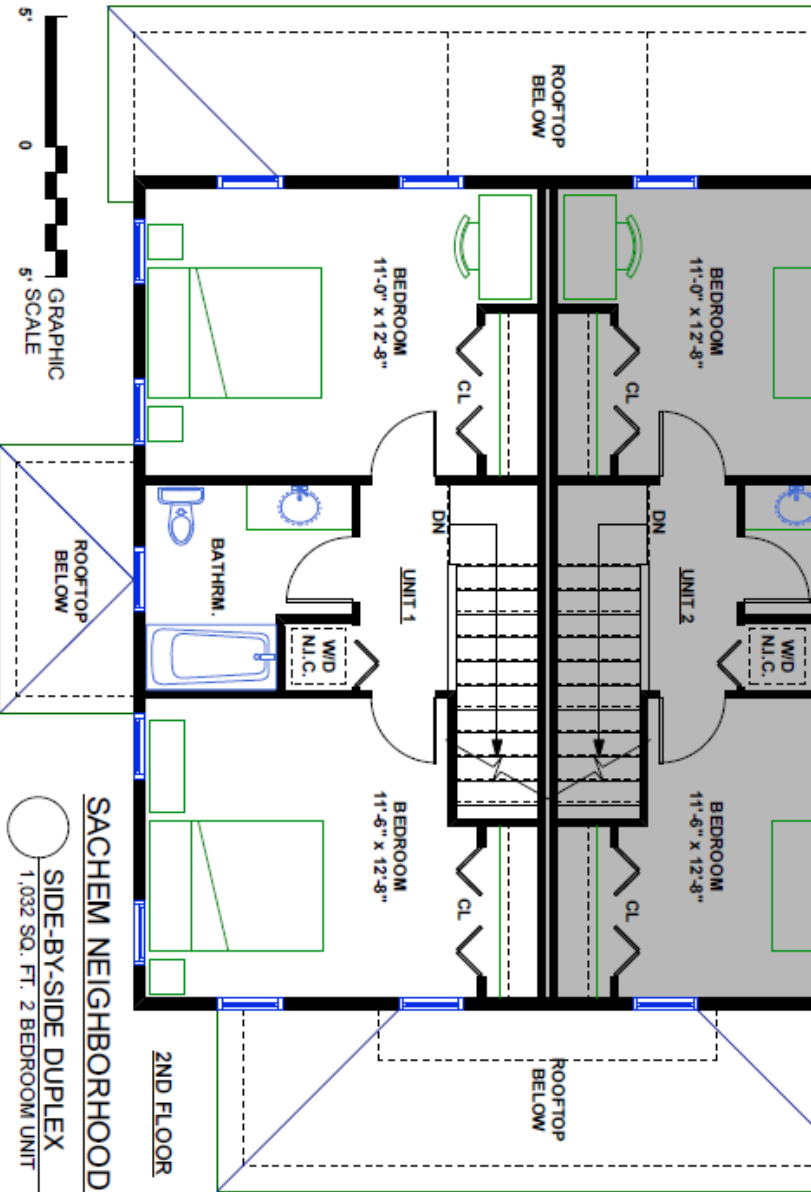
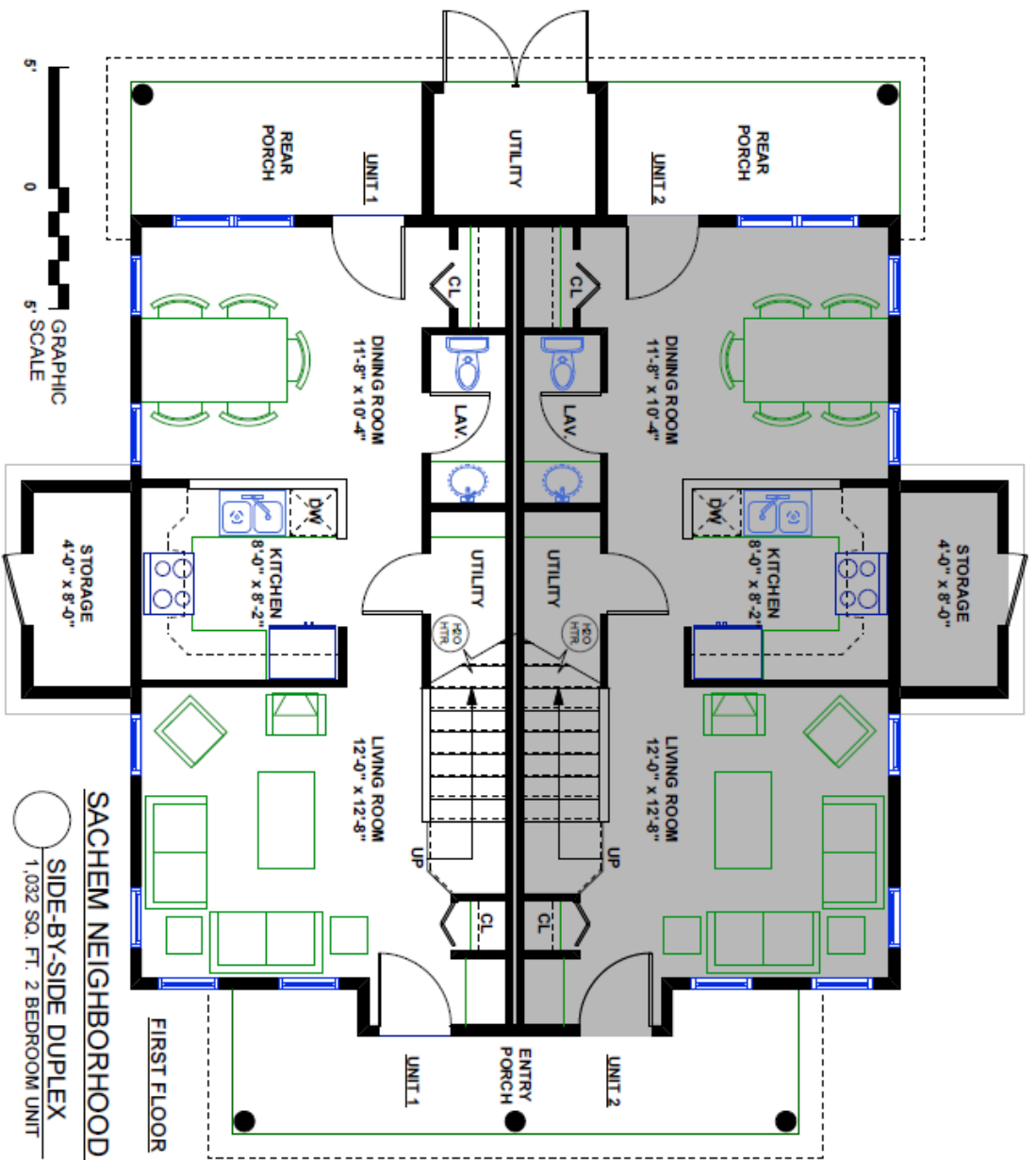


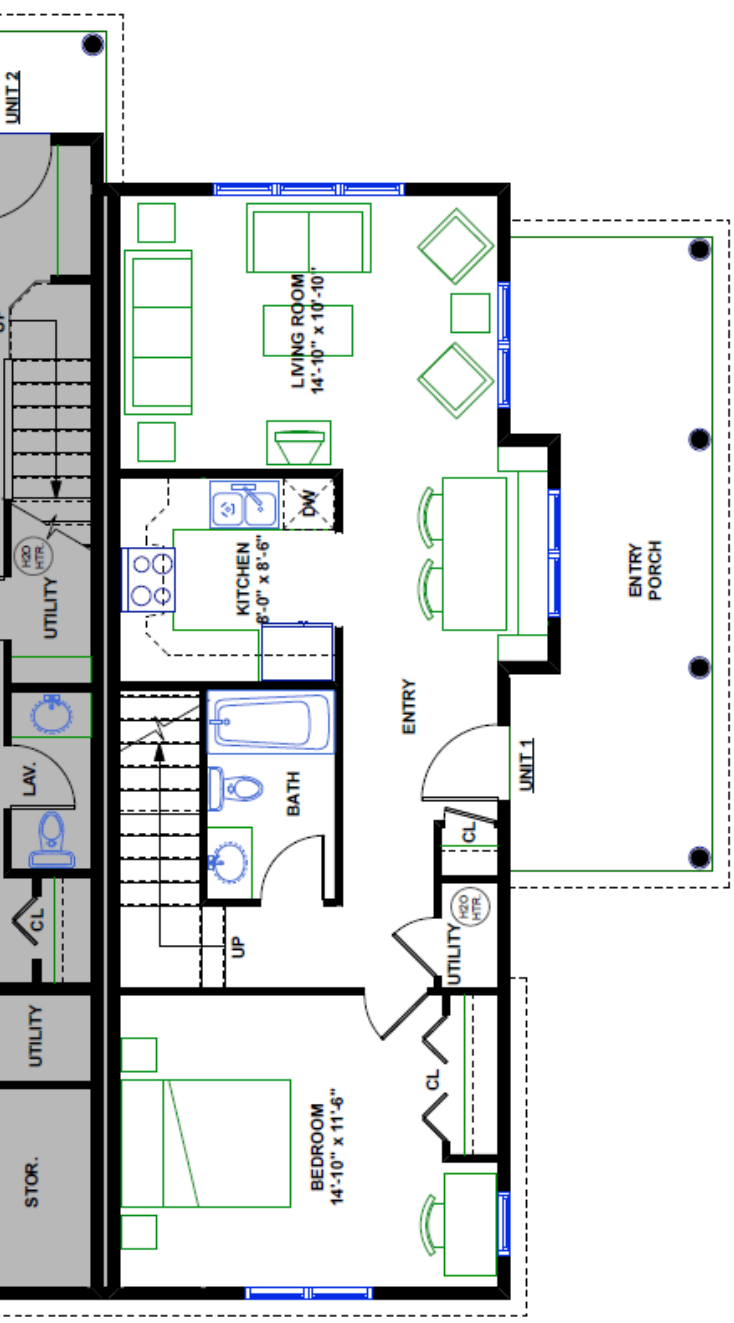
UNIT 2 & 5 (Opp.)  
(SECOND FLOOR)

**SACHEM NEIGHBORHOOD**

SIX-UNIT TOWNHOUSE  
1026 SQ. FT. 2 BEDROOM UNIT



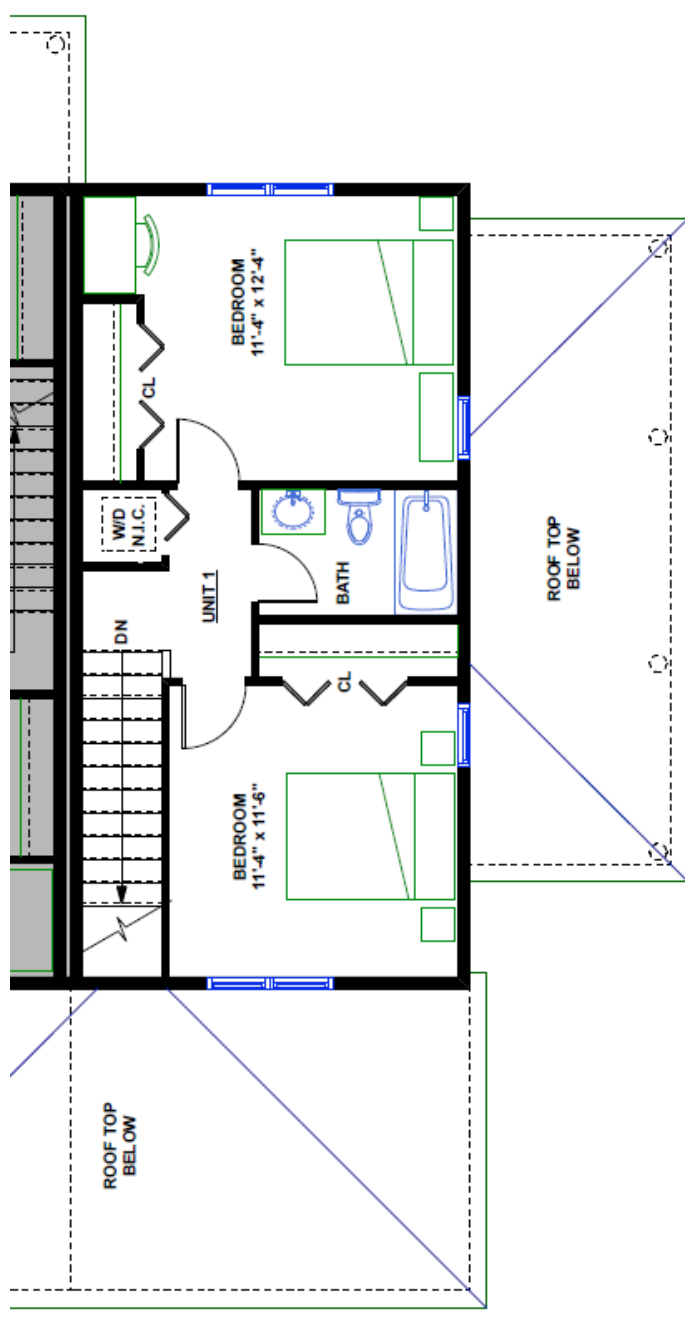




**UNIT 1 & 6 (Opp.)  
(FIRST FLOOR)**

**SACHEM NEIGHBORHOOD**

**SIX-UNIT TOWNHOUSE**  
1222 SQ. FT. 3 BEDROOM UNIT



**UNIT 1 & 6 (Opp.)  
(SECOND FLOOR)**

**SACHEM NEIGHBORHOOD**

**SIX-UNIT TOWNHOUSE**  
1222 SQ. FT. 3 BEDROOM UNIT



