

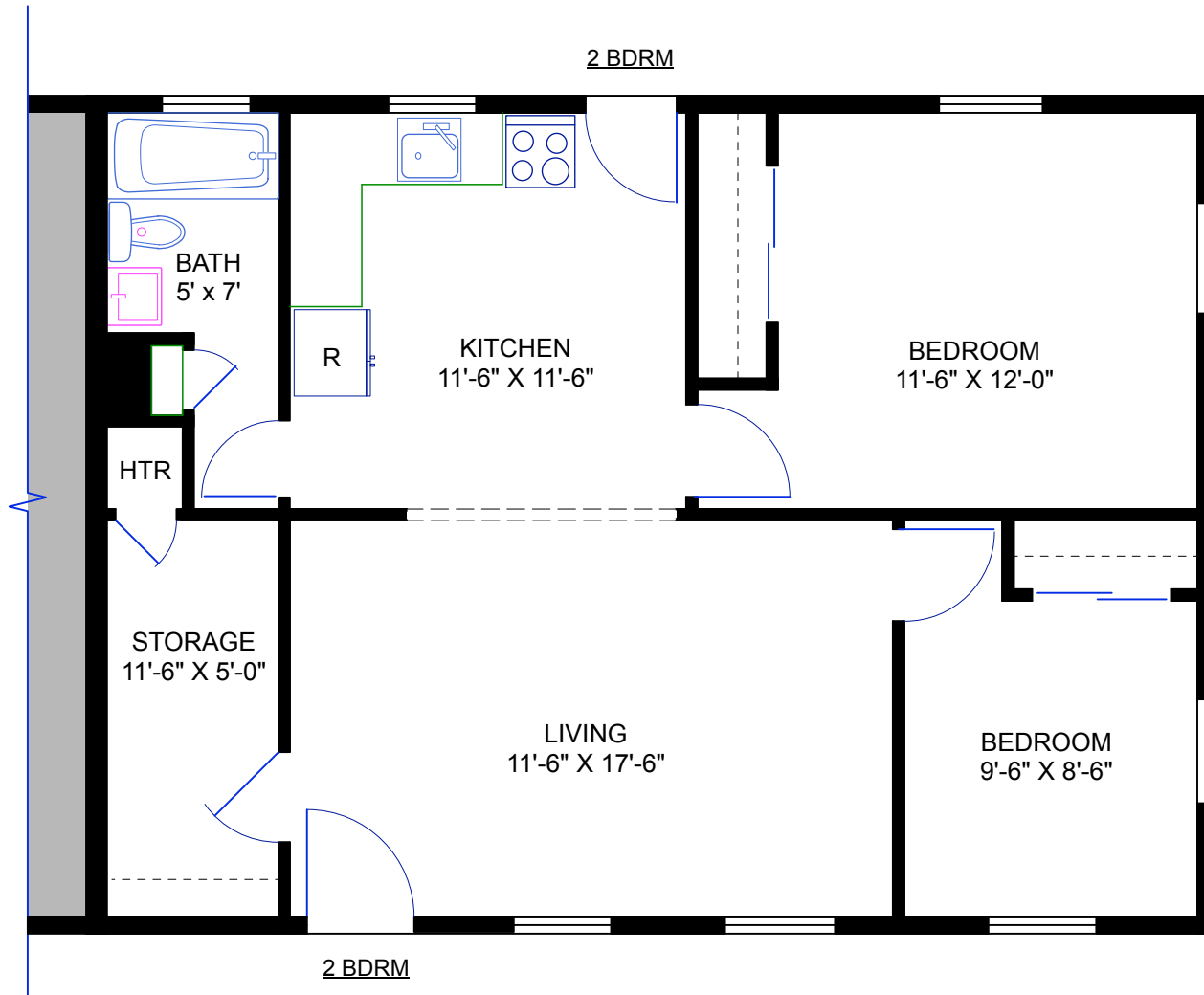
Sachem Village Housing By Unit Type (Total Inventory*)

Apartment Type	Sq Ft	No. of Apts	No. of Beds	No. of Baths	Washer/Dryer	Dish washer	Storage	Heat incl.	Hot Water Incl.	FY26 Base Market Rent Range
Field Road										
2-Bedroom Duplex	644	10	2	1	NO hook up- Laundromat on Haddock Ln	N	N	N	N	\$1,320
3-Bedroom Duplex	704	10	3	1	NO hook up- Laundromat on Haddock Ln	N	N	N	N	\$1,600
2-Bedroom Duplex - Renovated	644	4	3	1	NO hook up- Laundromat on Haddock Ln	Y	N	N	N	\$1,430
3-Bedroom Duplex - Renovated	704	2	2	1	NO hook up- Laundromat on Haddock Ln	Y	N	N	N	\$1,730
North Sachem										
2-Bedroom Townhouse	603	18	2	1	Hook Up Only - Side-by-Side	N	N	Y	Y	\$1,525
2-Bedroom Townhouse- Renovated	603	6	2	1	Stackable units included	N	N	Y	Y	\$1,695
Phase I										
1-Bedroom Triplex **	683	3	1	1	Hook Up Only - Side-by-Side	Y	Y	Y	Y	\$1695 - \$1725
2-Bedroom 4-plex Interior unit	1,025	22	2	1	Hook Up Only - Side-by-Side	Y	Y	Y	Y	\$2200 - \$2250
2-Bedroom 4-plex Exterior unit	1,025	32	2	1	Hook Up Only - Side-by-Side	Y	Y	Y	Y	\$2240 - \$2290
2-Bedroom 4-plex Interior unit	1,072	22	2	1	Hook Up Only - Side-by-Side	Y	Y	Y	Y	\$2200 - \$2250
2-Bedroom 4-plex Exterior unit	1,072	32	2	1	Hook Up Only - Side-by-Side	Y	Y	Y	Y	\$2240 - \$2290
3-Bedroom Duplex	1,380	14	3	1	Hook Up Only - Side-by-Side	Y	Y	Y	Y	\$3175 - \$3225
Phase II										
1-Bedroom 6-8 plex	720	22	1	1	Hook Up Only - Stackable	Y	Y	Y	Y	\$1775 - \$1810
2-Bedroom Triplex **	832	8	2	1	Hook Up Only - Stackable	Y	Y	Y	Y	\$1870 - \$1910
2-Bedroom Duplex	938	10	2	1.5	Hook Up Only - Stackable	Y	Y	Y	Y	\$2100 - \$2150
2-Bedroom Duplex	1,024	6	2	2.5	Hook Up Only - Stackable	Y	Y	Y	Y	\$2315 - \$2365
2-Bedroom 6-8 plex	1,026	14	2	1.5	Hook Up Only - Stackable	Y	Y	Y	Y	\$2230 - \$2280
2-Bedroom Duplex	1,032	2	2	1.5	Hook Up Only - Stackable	Y	Y	Y	Y	\$2230 - \$2280
3-Bedroom 6-8 plex	1,222	14	3	2	Hook Up Only - Stackable	Y	Y	Y	Y	\$3075 - \$3125
2-Bedroom Triplex	1,250	4	2	2.5	Hook Up Only - Side-by-Side	Y	Y	Y	Y	\$2825 - \$2875

*Total inventory means all the units at Sachem, not what is available at any given time to lease.

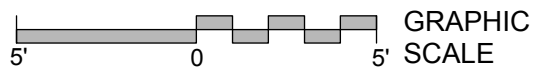
**Accessible Unit

Pets Permitted upon prior approval with additional monthly cost.

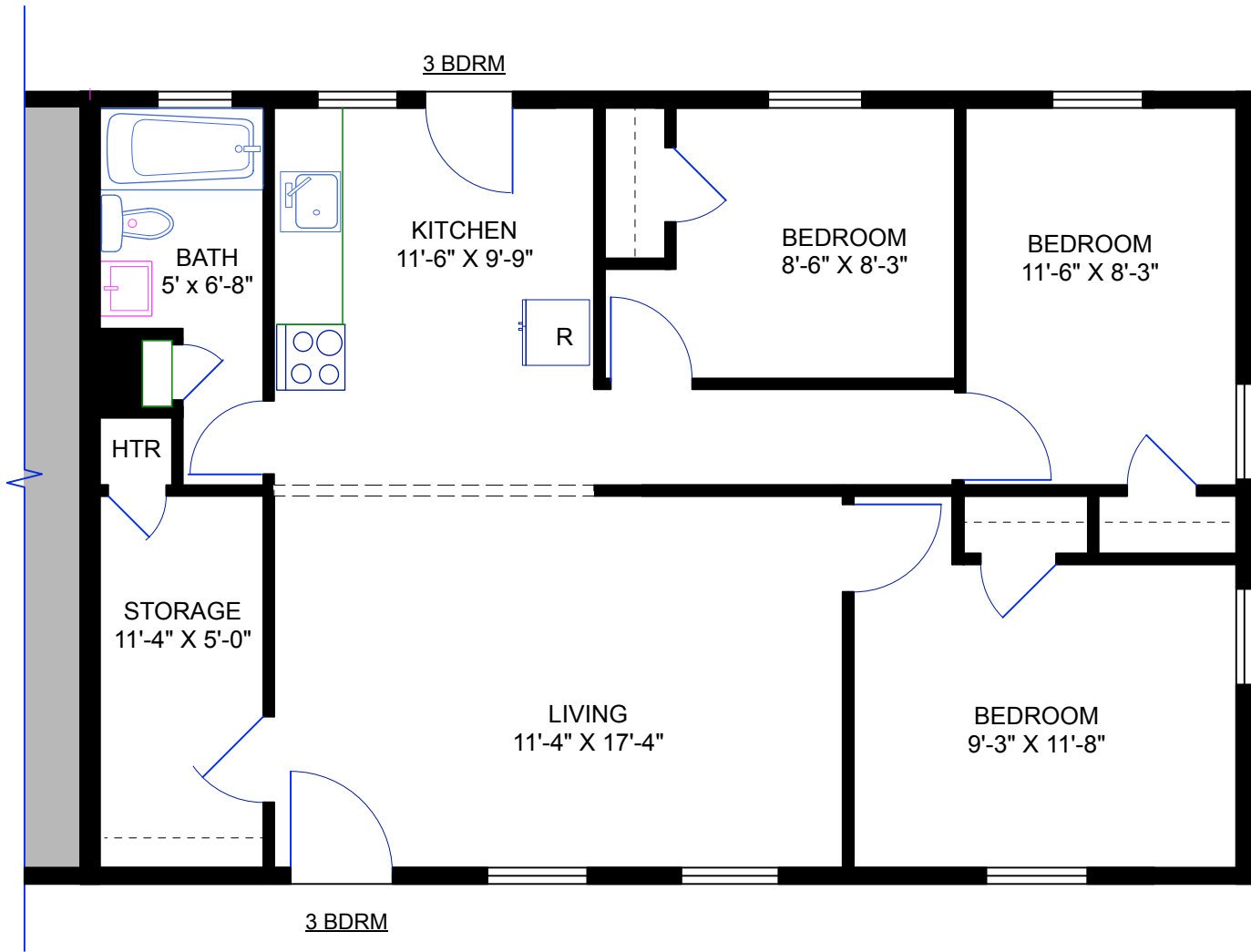


FIRST FLOOR

SACHEM VILLAGE



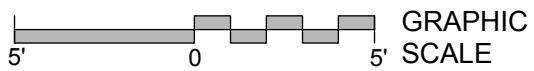
○ **"FIELD" 2 BDRM DUPLEX**
644 SQ. FT.

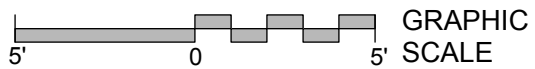
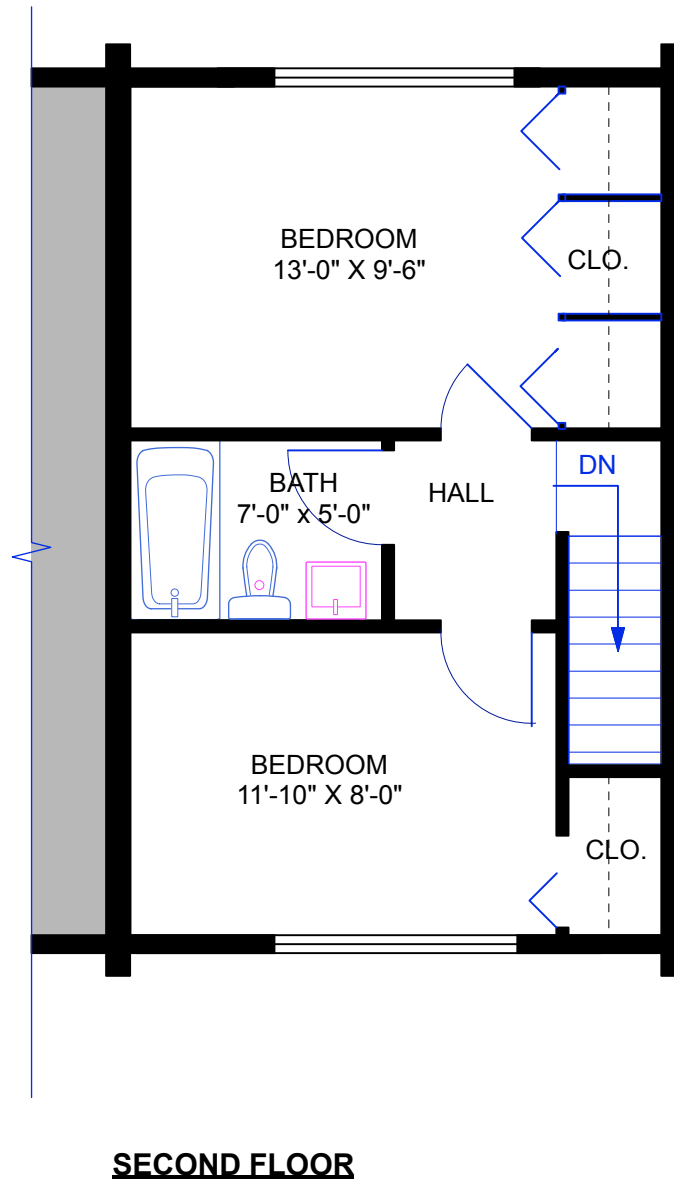
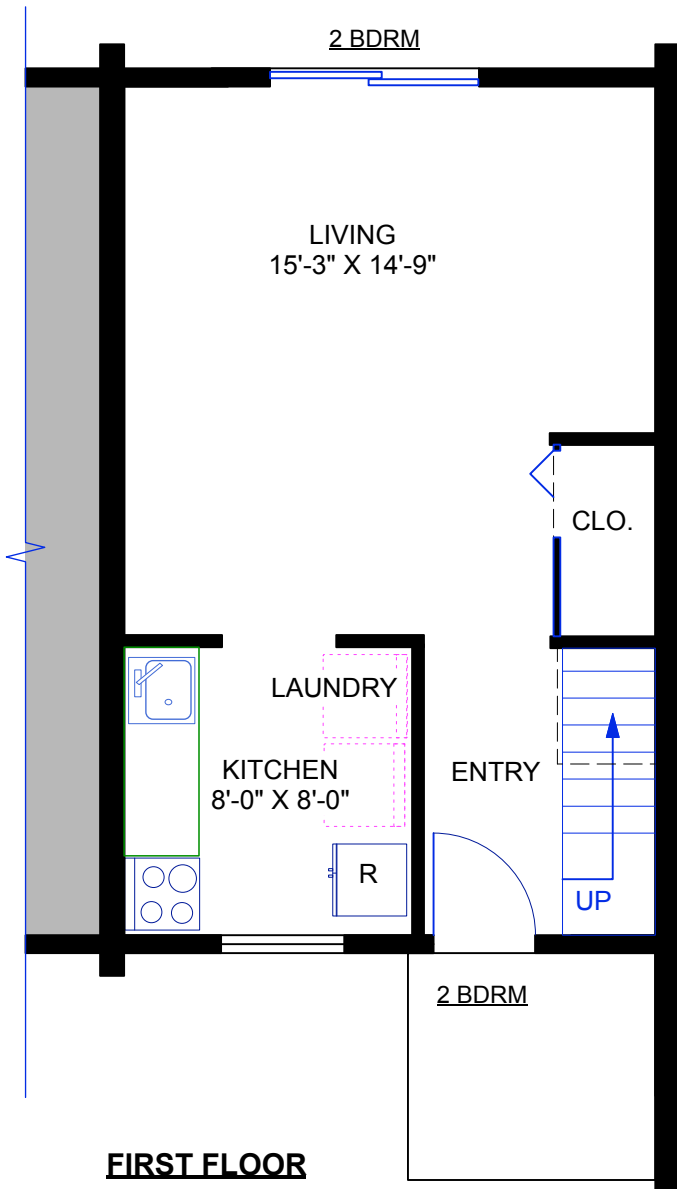


FIRST FLOOR

SACHEM VILLAGE

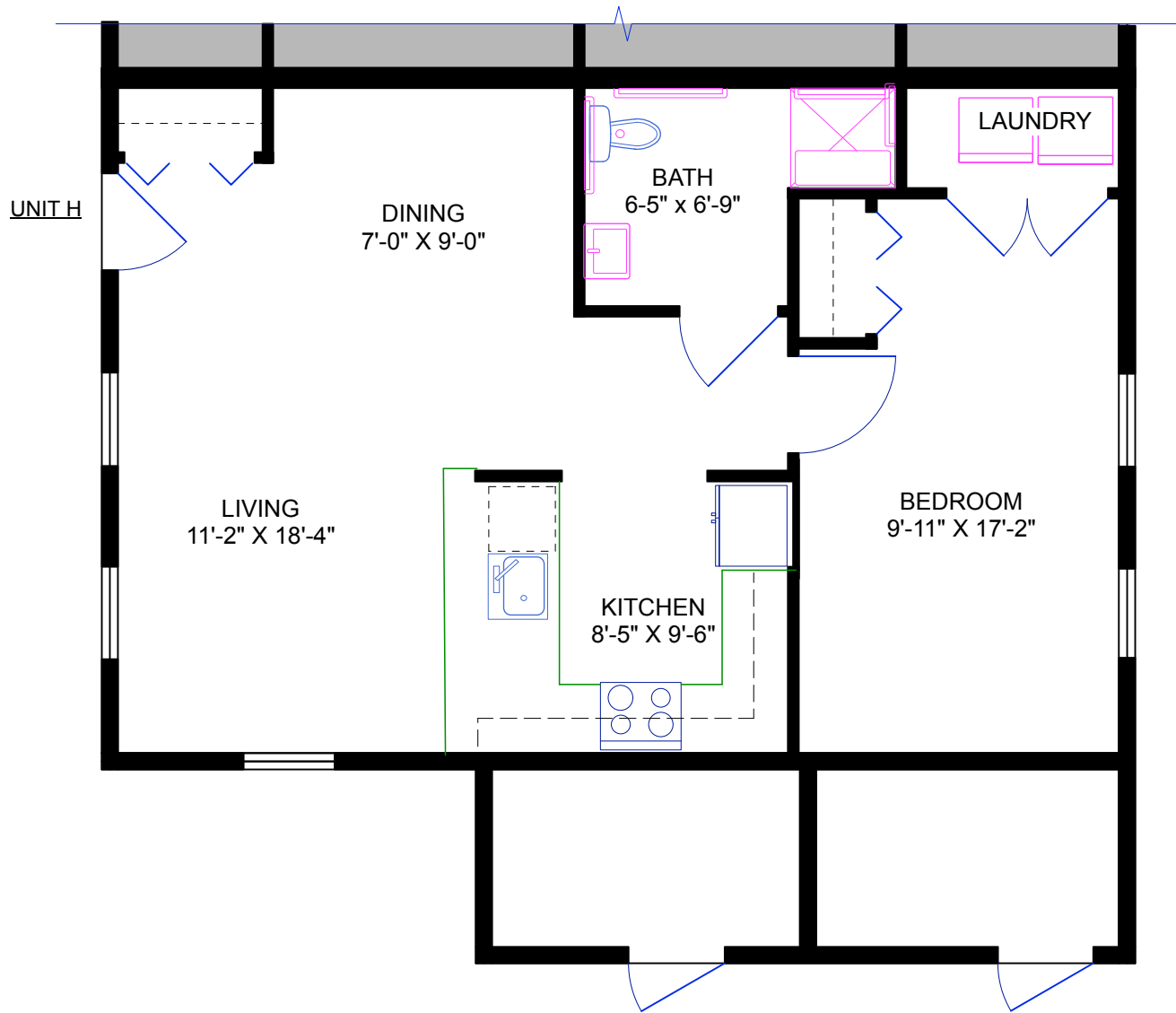
FIELD RD. 3 BDRM DUPLEX
704 SQ. FT.





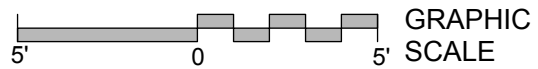
SACHEM VILLAGE

2 BEDROOM UNIT
603 SQ. FT.

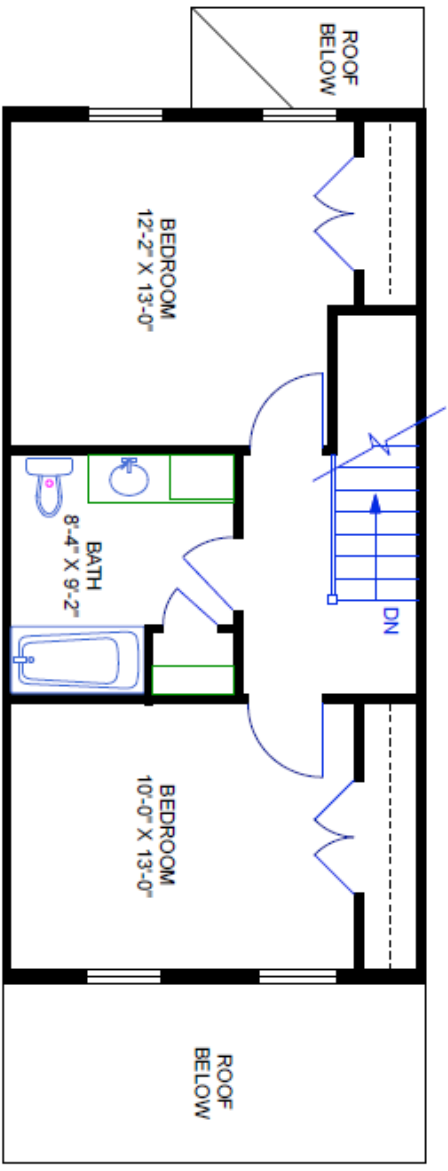


FIRST FLOOR

SACHEM VILLAGE



○ UNIT H - ACCESSIBLE
683 SQ. FT.

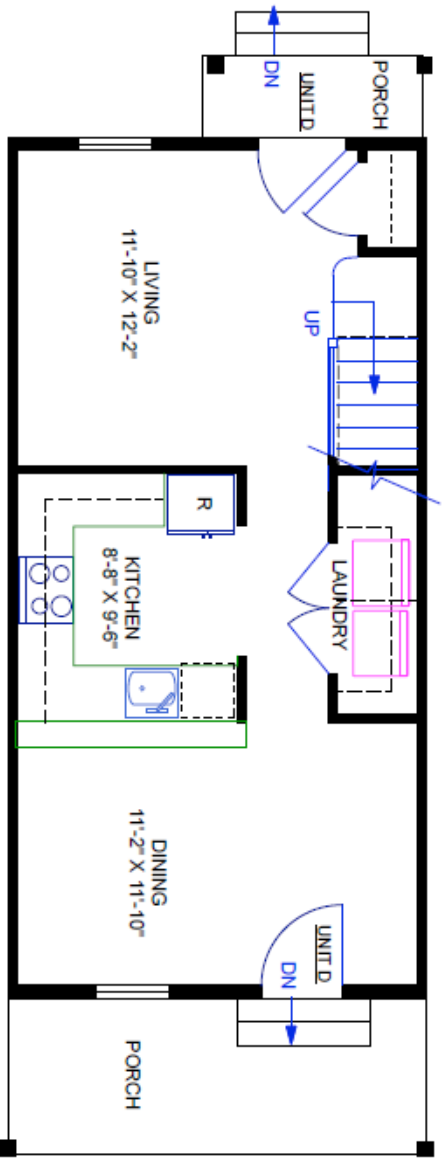


SECOND FLOOR

SACHEM VILLAGE

UNIT D - 2 STORY

1025 SQ. FT.



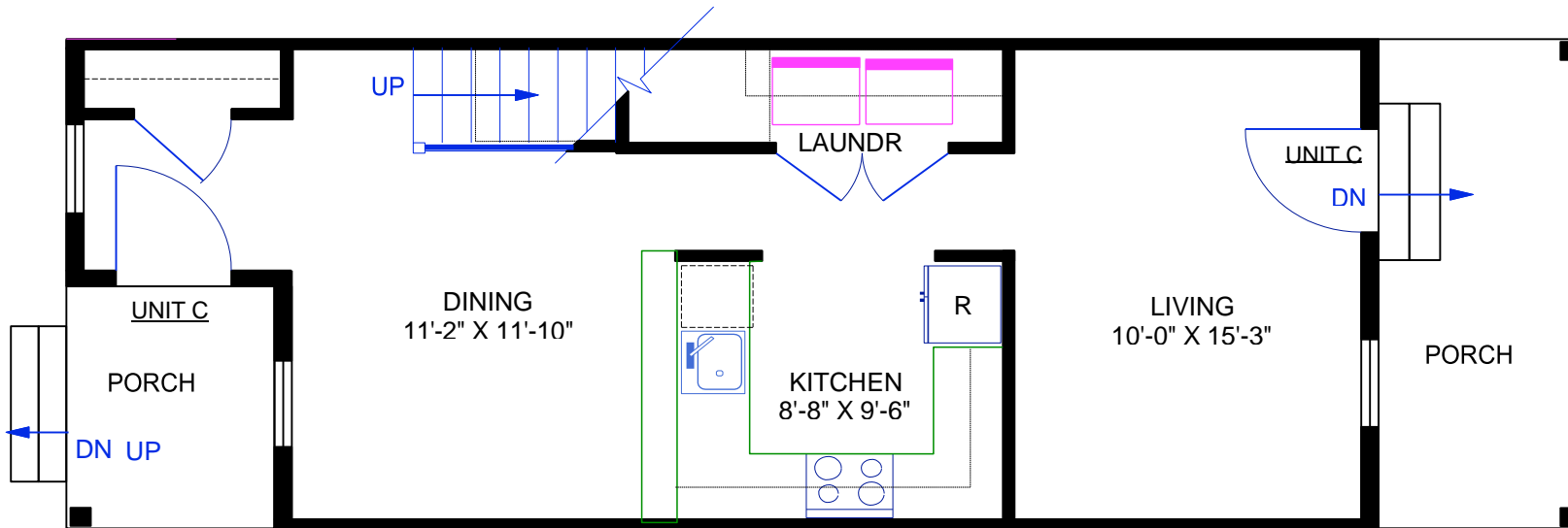
FIRST FLOOR

SACHEM VILLAGE

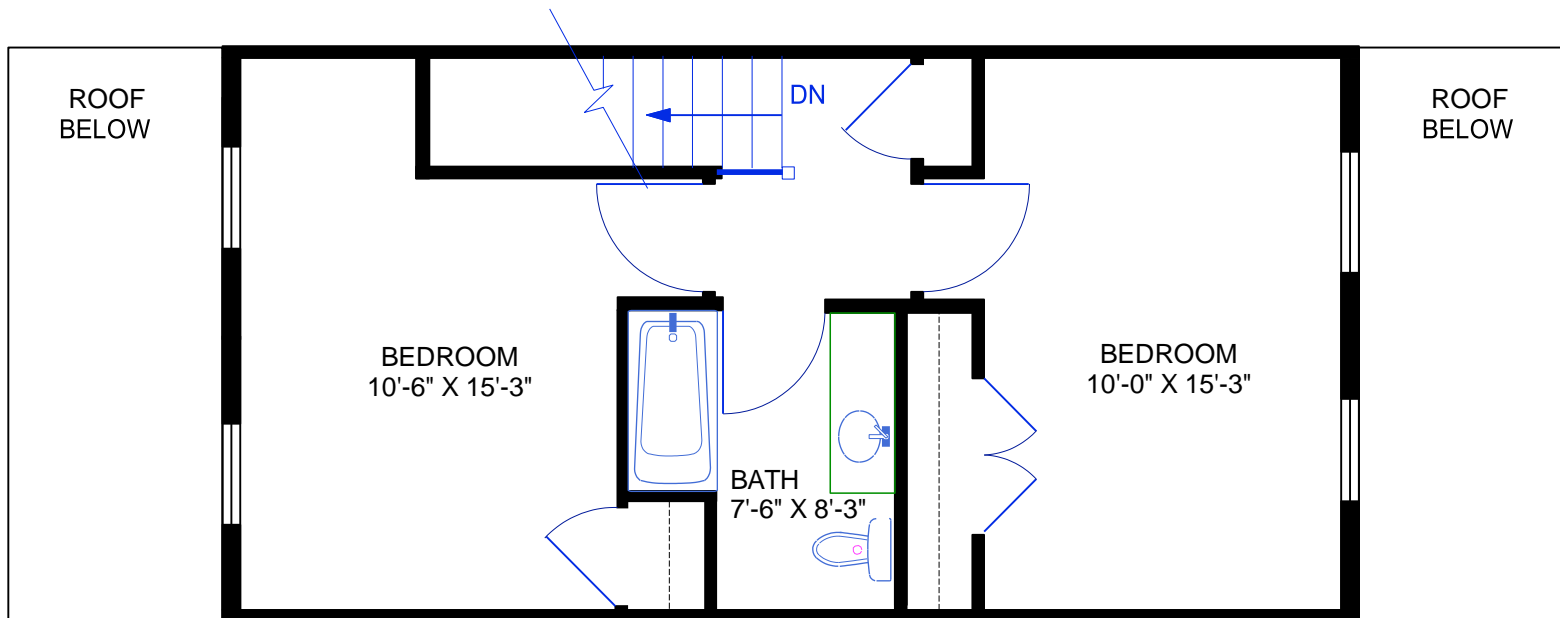
UNIT D - 2 STORY

1025 SQ. FT.

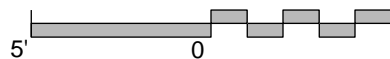


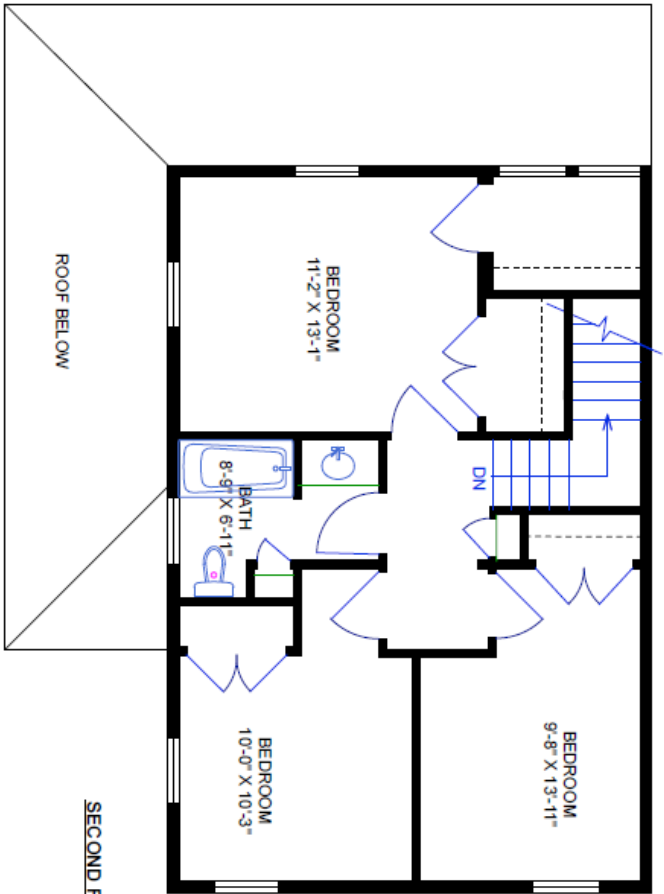


FIRST FLOOR 1072 sq ft



SECOND FLOOR 1072 sq ft

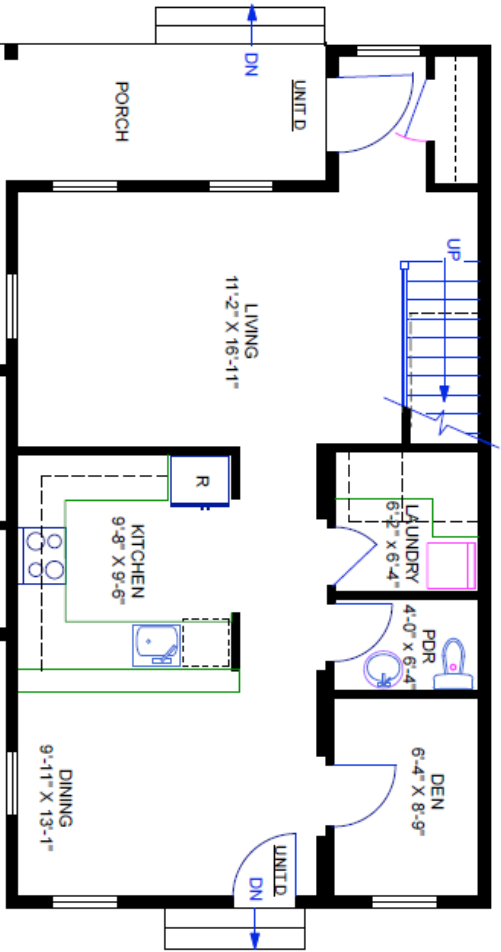




5
0
5 GRAPHIC SCALE

SACHEM VILLAGE
UNIT E - 2 STORY
1385 SQ. FT.

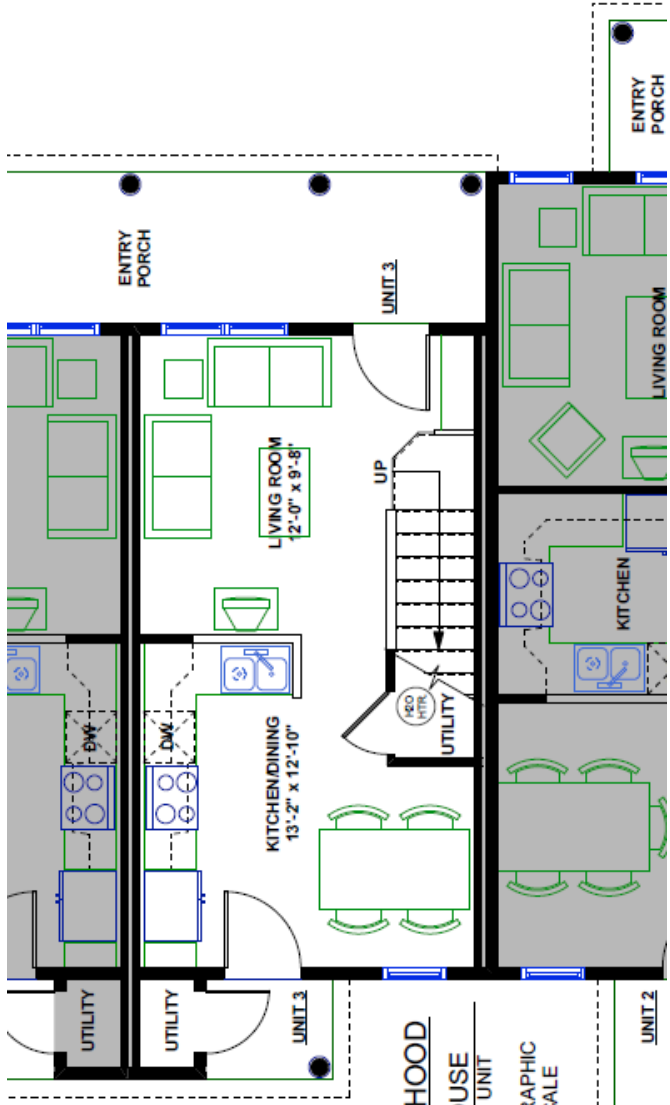
SECOND FLOOR



5
0
5 GRAPHIC SCALE

SACHEM VILLAGE
UNIT E - 2 STORY
1385 SQ. FT.

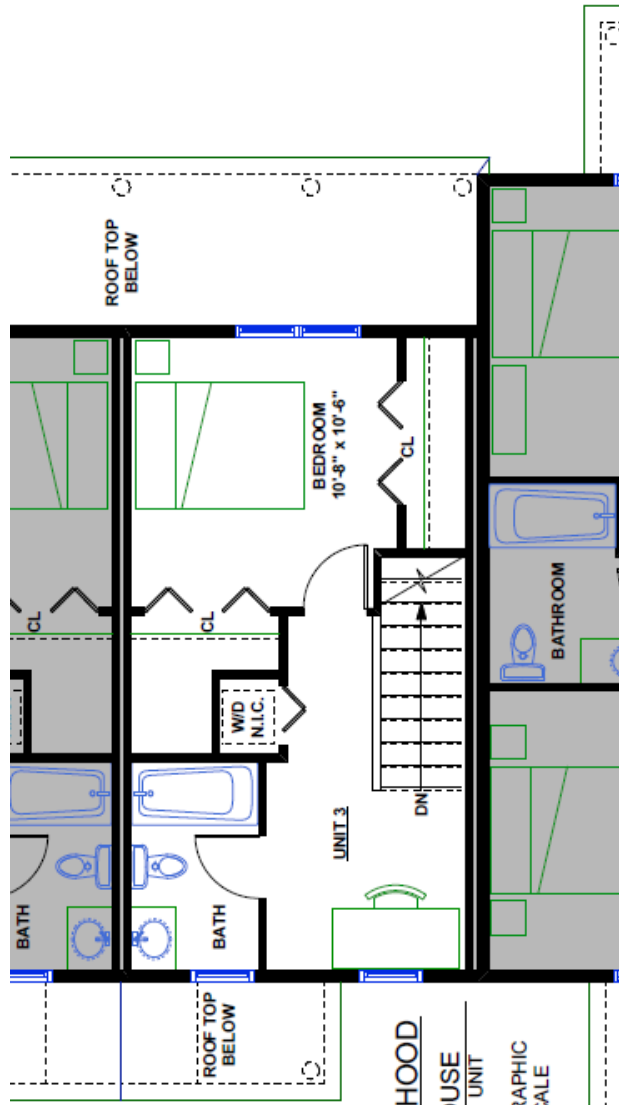
FIRST FLOOR



**UNIT 3 & 4 (Opp.)
(FIRST FLOOR)**

SACHEM NEIGHBORHOOD

○ SIX-UNIT TOWNHOUSE
720 SQ. FT. 1 BEDROOM UNIT



**UNIT 3 & 4 (Opp.)
(SECOND FLOOR)**

SACHEM NEIGHBORHOOD

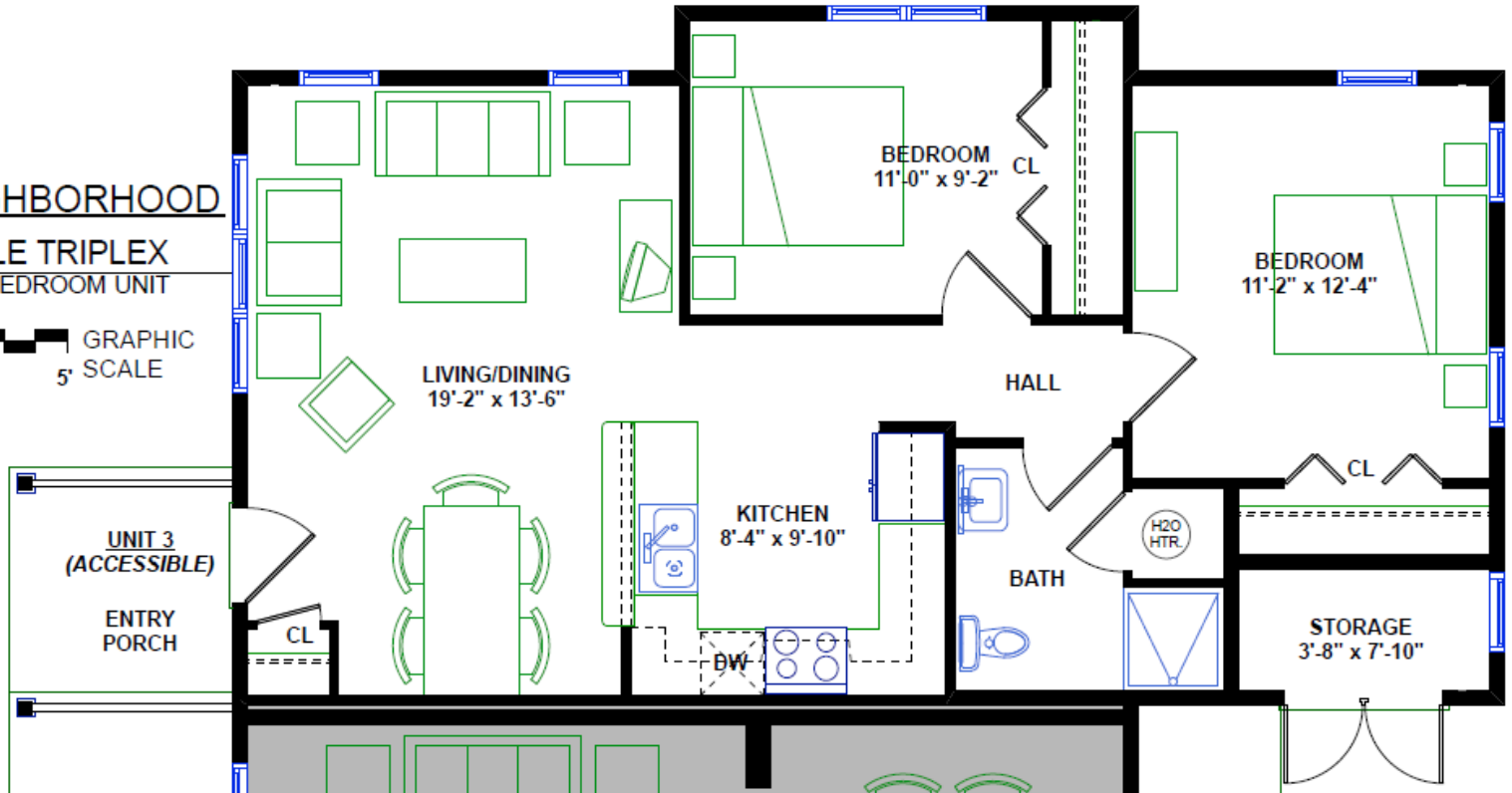
○ SIX-UNIT TOWNHOUSE
720 SQ. FT. 1 BEDROOM UNIT

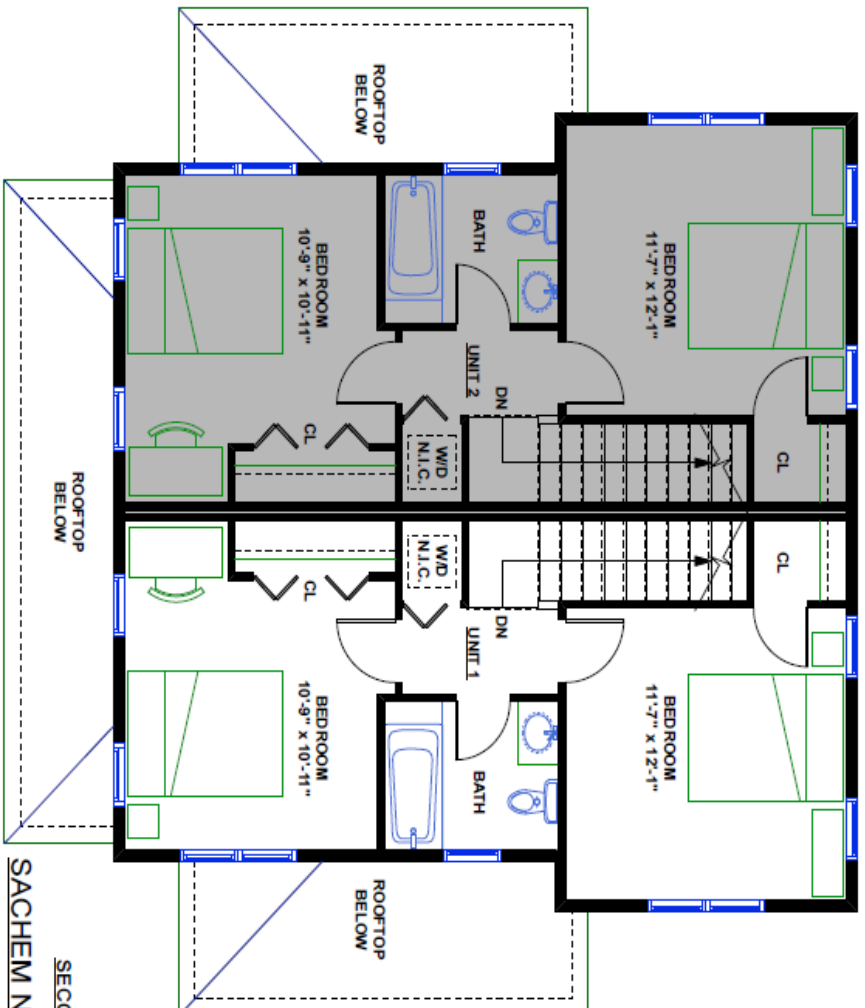


**UNIT 3 (1 OPP.)
(ACCESSIBLE)**

SACHEM NEIGHBORHOOD

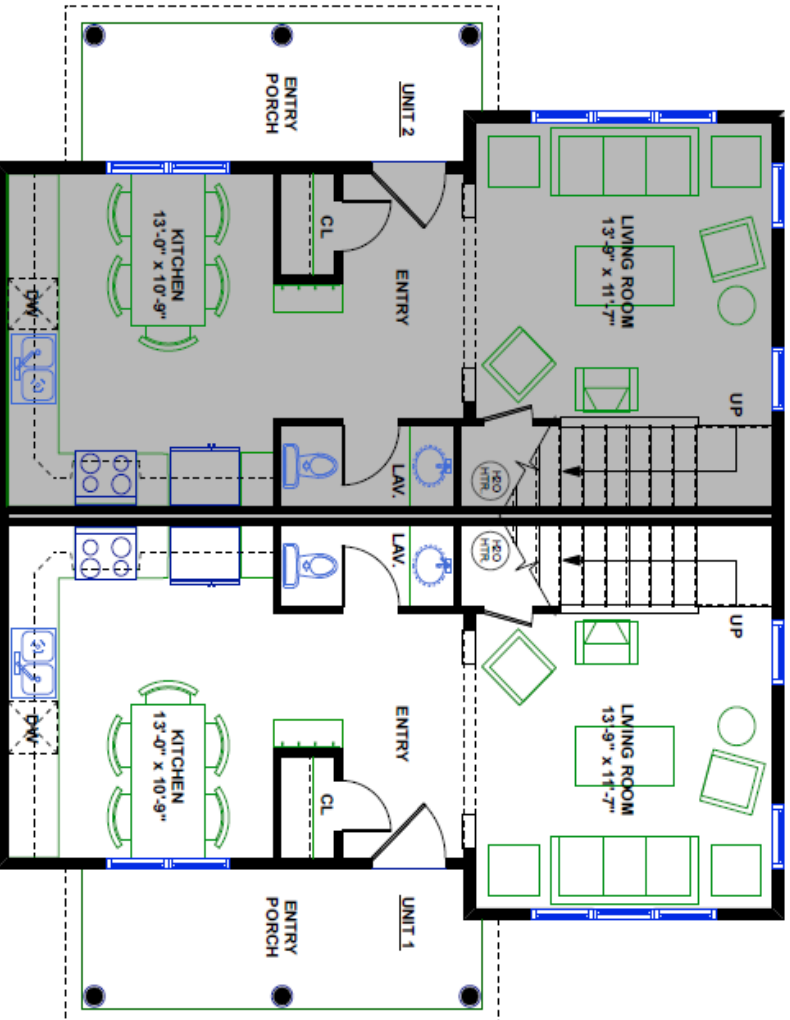
ACCESSIBLE TRIPLEX
832 SQ. FT. 2 BEDROOM UNIT





SECOND FLOOR

SACHEM NEIGHBORHOOD



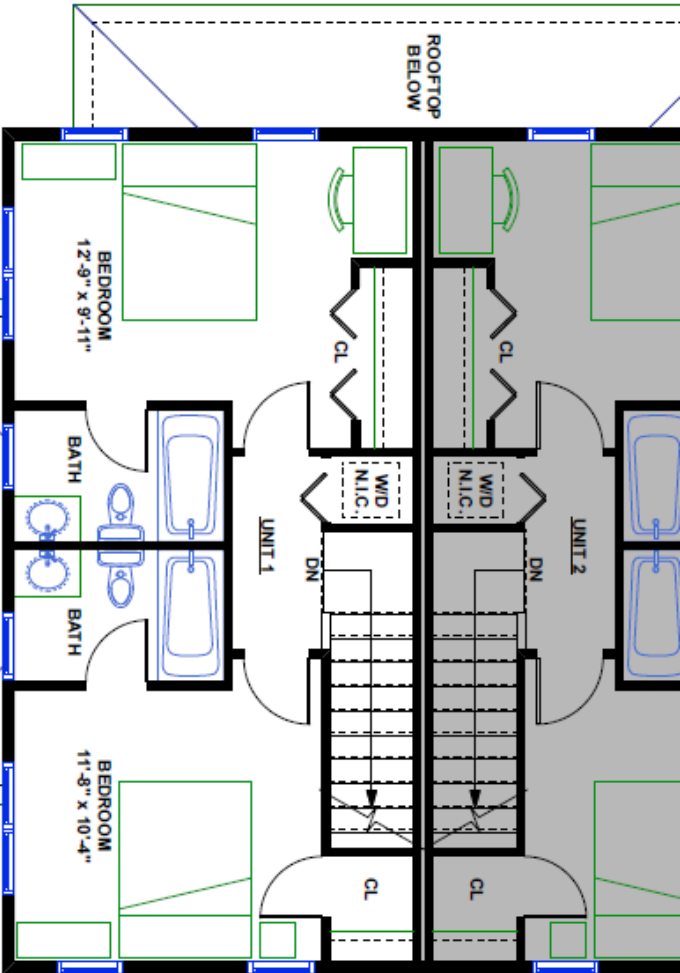
FIRST FLOOR

SACHEM NEIGHBORHOOD

BACK-TO-BACK DUPLEX 'B'

938 SQ. FT. 2 BEDROOM UNIT

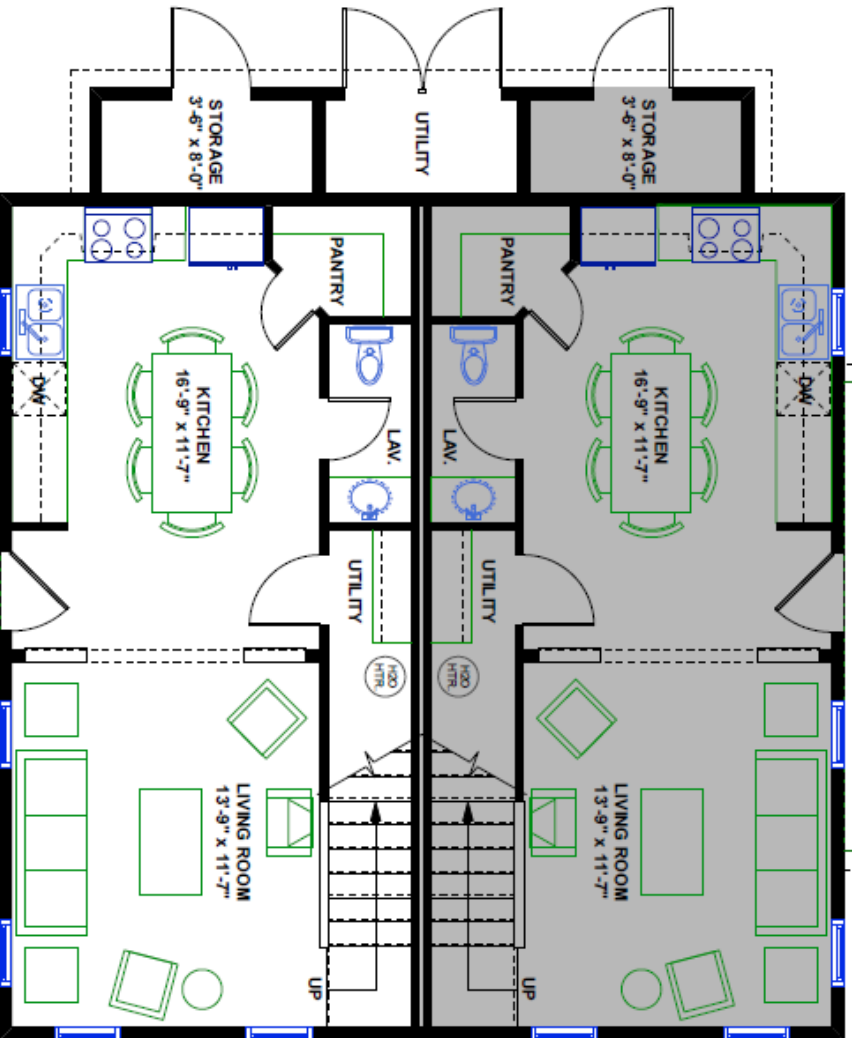




SECOND FLOOR

SACHEM NEIGHBORHOOD

BACK-TO-BACK DUPLEX UNIT
1,024 SQ. FT. 2 BEDROOM UNIT



FIRST FLOOR

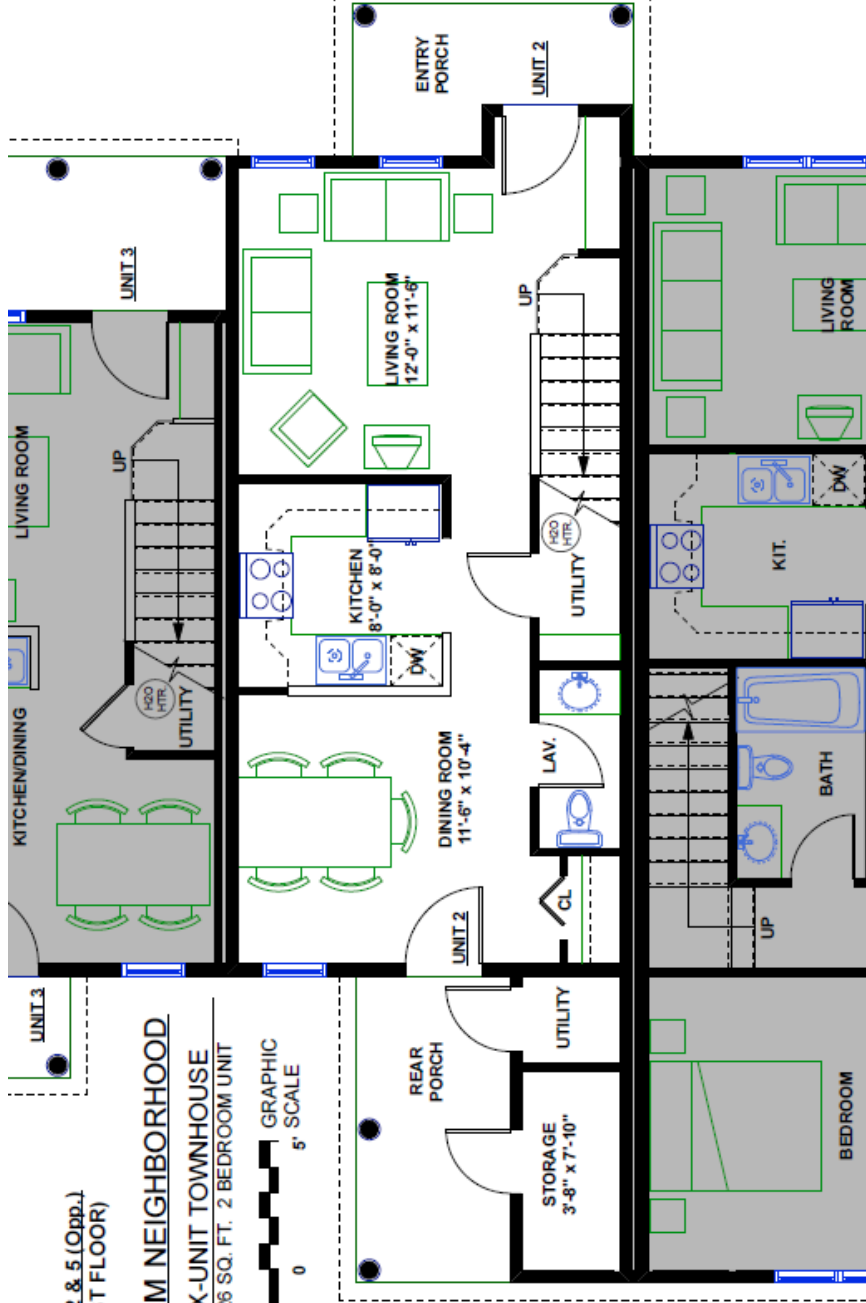
SACHEM NEIGHBORHOOD

BACK-TO-BACK DUPLEX UNIT
1,024 SQ. FT. 2 BEDROOM UNIT

UNIT 2 & 5 (Opp.)
(FIRST FLOOR)

SACHEM NEIGHBORHOOD

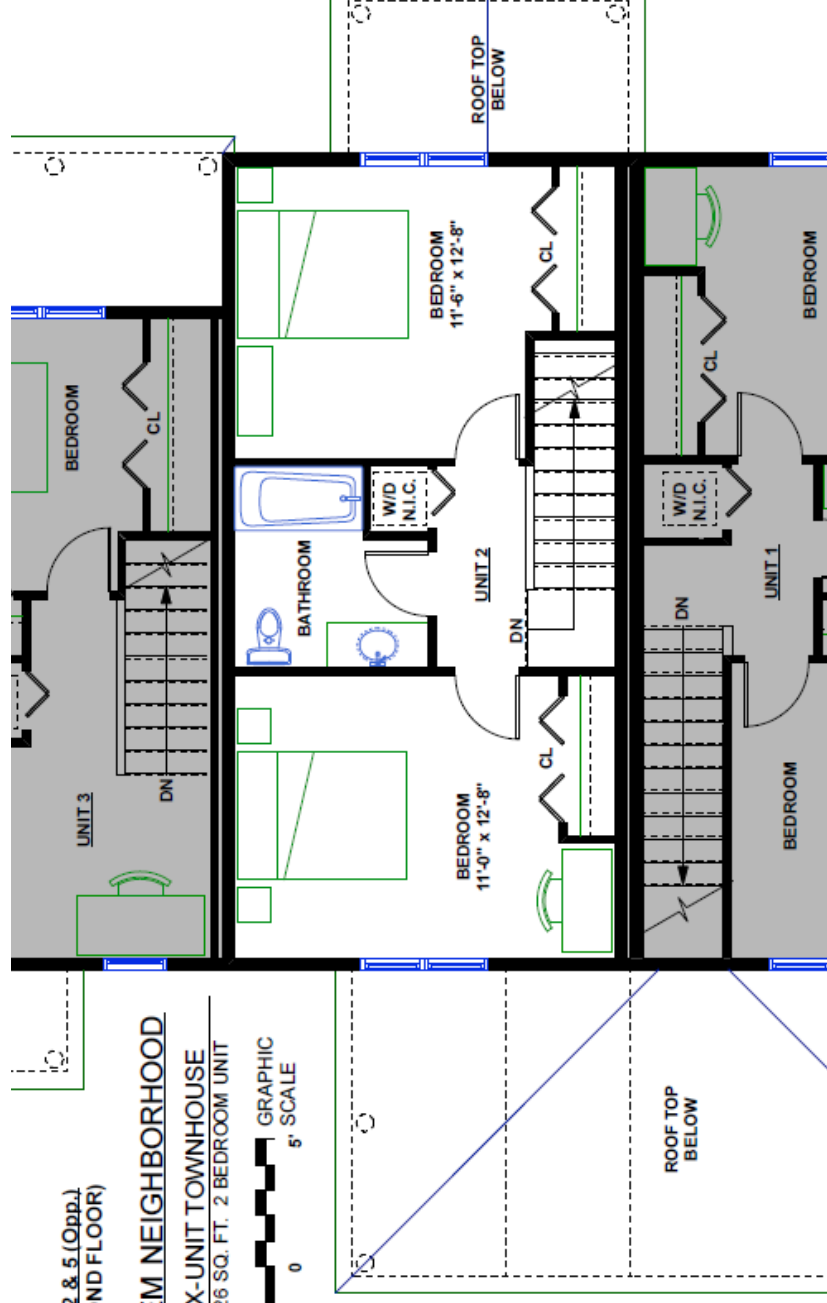
SIX-UNIT TOWNHOUSE
1026 SQ. FT. 2 BEDROOM UNIT

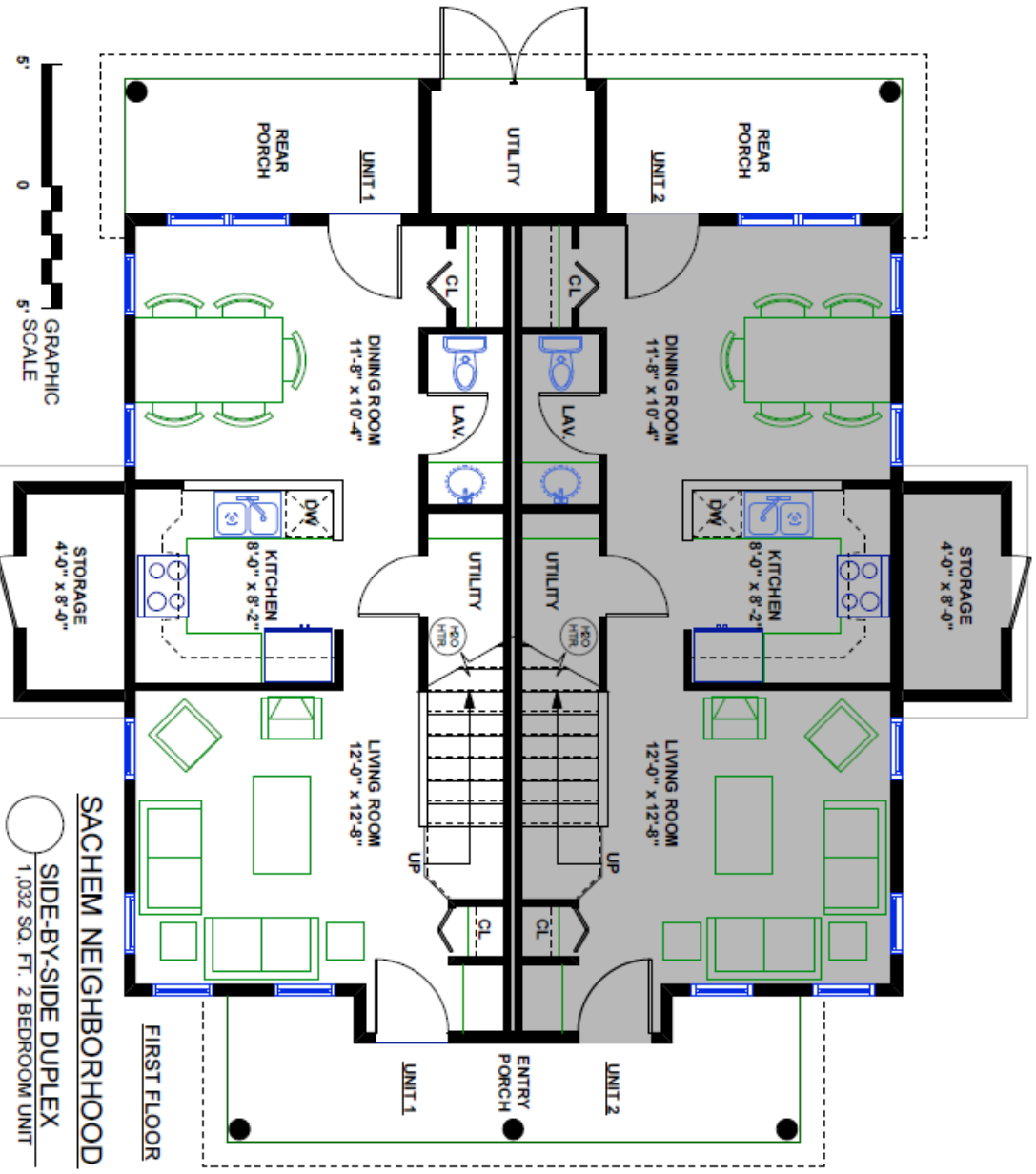
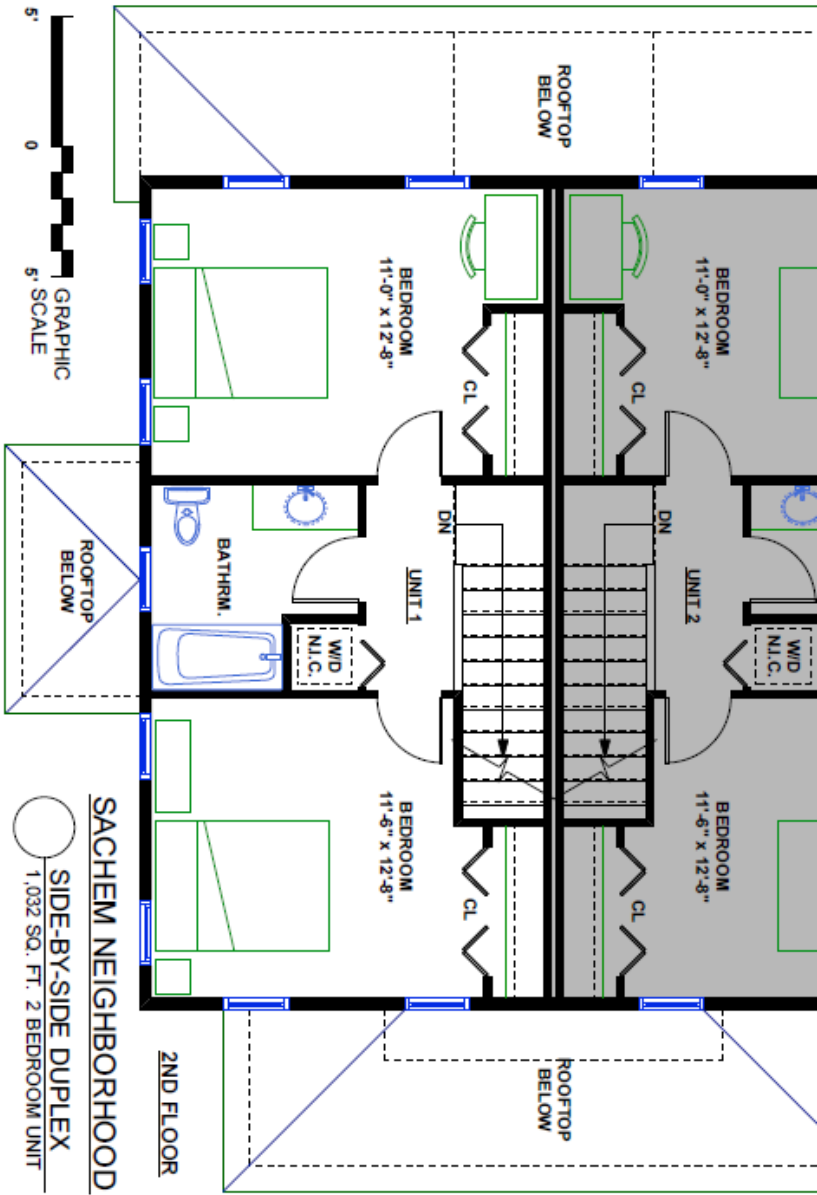


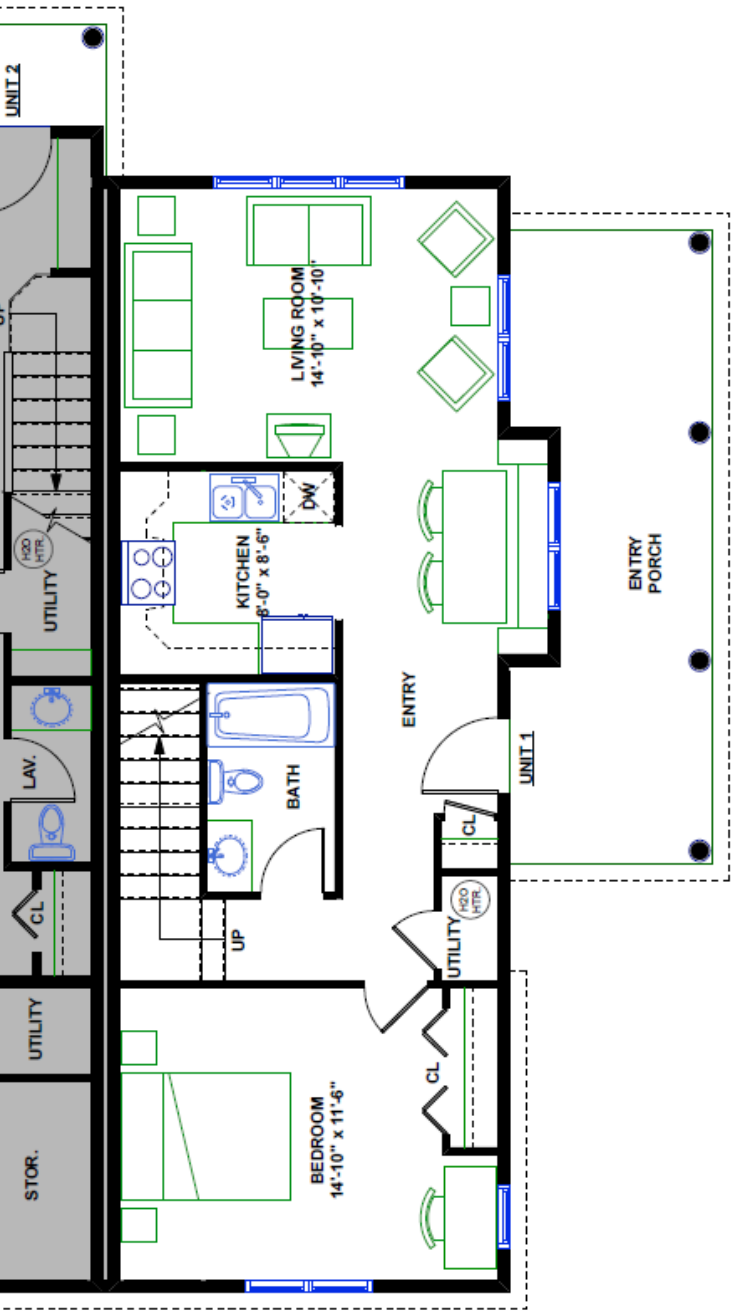
UNIT 2 & 5 (Opp.)
(SECOND FLOOR)

SACHEM NEIGHBORHOOD

SIX-UNIT TOWNHOUSE
1026 SQ. FT. 2 BEDROOM UNIT



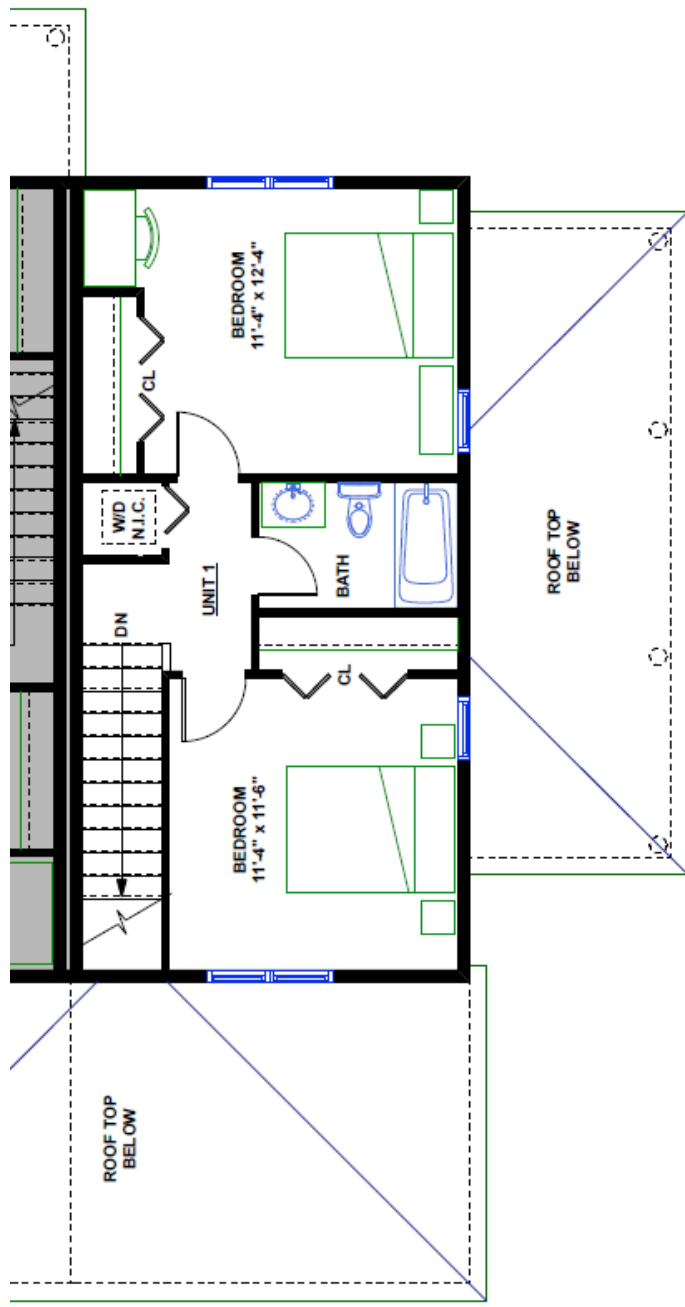




UNIT 1 & 6 (Opp.)
(FIRST FLOOR)

SACHEM NEIGHBORHOOD

SIX-UNIT TOWNHOUSE
1222 SQ. FT. 3 BEDROOM UNIT



UNIT 1 & 6 (Opp.)
(SECOND FLOOR)

SACHEM NEIGHBORHOOD

SIX-UNIT TOWNHOUSE
1222 SQ. FT. 3 BEDROOM UNIT

